

WAAS CH 45525 W12B	APP CRS 121°	Rwy ldg TDZE Apt Elev	7620 841 842
--	------------------------	-----------------------------	---

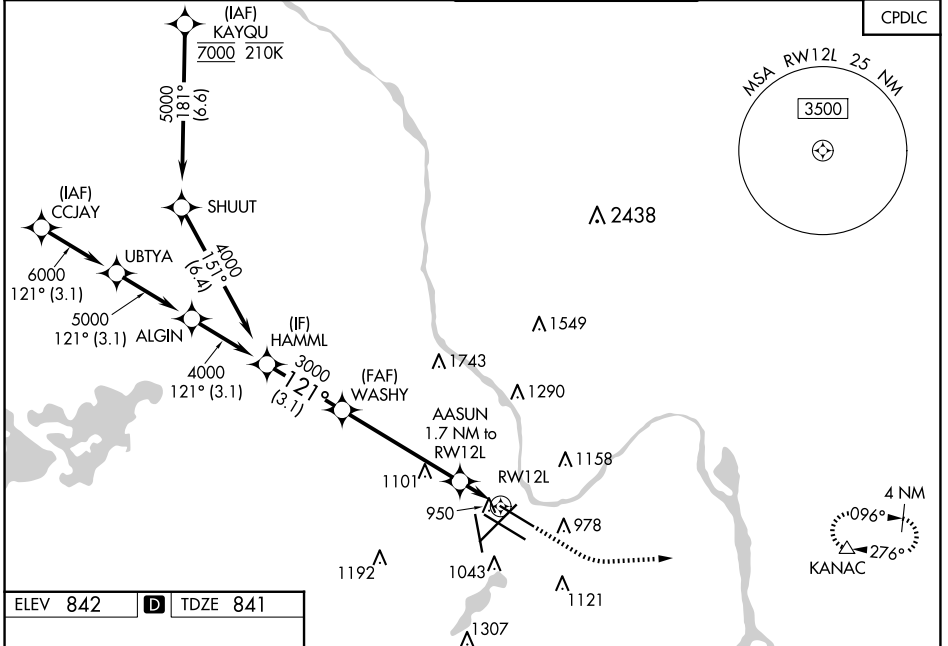
RNAV (GPS) Z RWY 12L

MINNEAPOLIS-ST PAUL INTL/WOLD-CHAMBERLAIN (MSP)

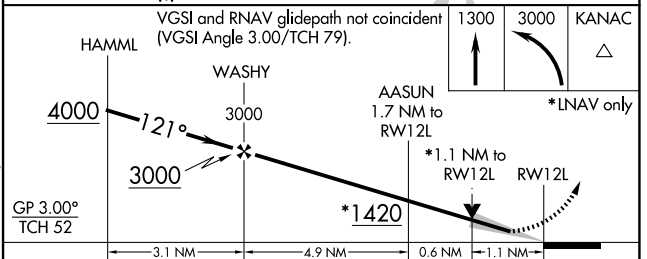
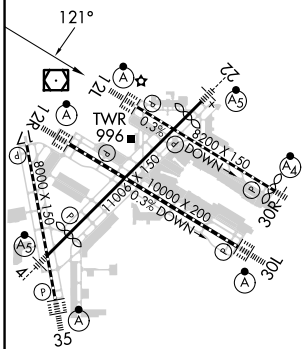
⚠ For uncompensated Baro-VNAV systems, LNAV/VNAV NA below -20°C (-4°F) or above 54°C (130°F). Simultaneous approach authorized with Rwy 12R. Use of FD or AP providing RNAV track guidance required during simultaneous operations. LNAV procedure NA during simultaneous operations. DME/DME RNP-0.3 NA. For inop ALS, increase LPV Cat E visibility to RVR 4000, LNAV/VNAV Cat E visibility to 1/2 SM, LNAV Cats C/D/E visibility to RVR 6000.

ALS-F-2
MISSED APPROACH:
Climb to 3000, then climbing left turn to 3000 direct KANAC and hold.

D-ATIS ARR 135.35 239.275 DEP 120.8	MINNEAPOLIS APP CON 118.725 335.65 (Rwy 35) 119.3 335.65 (12L-30R, 4-22, 17) 126.95 335.65 (12R-30L)	MINNEAPOLIS TOWER 123.675 273.55 (17-35) 123.95 273.55 (12L-30R) 126.7 273.55 (12R-30L, 4-22)	GND CON N 121.8 348.6 S 121.9 348.6 W 127.925 348.6	CLNC DEL 133.2
---	--	---	---	--------------------------



ELEV 842	D	TDZE 841
----------	----------	----------



GP 3.00° TCH 52	4000	3000	1420	1260	419
	← 3.1 NM	← 4.9 NM	← 0.6 NM	← 1.1 NM	
CATEGORY	A	B	C	D	E
LPV DA		1041/18	200 (200-½)		
LNAV/VNAV DA		1211/40	370 (400-¾)		
LNAV MDA	1260/24	419 (500-½)	1260/40	419 (500-¾)	
C CIRCLING	1360-1	518 (600-1)	1460-1¾ 618 (700-1¾)	1660-2¾ 818 (900-2¾)	1800-3 958 (1000-3)

HIRL all Rwys
REIL Rwy 17
TDZ/CL Rwys 12L, 12R, 30L, and 35