

APP CRS	Rwy Idg	8000
350°	TDZE	834
	Apt Elev	842

RNAV (RNP) Y RWY 35

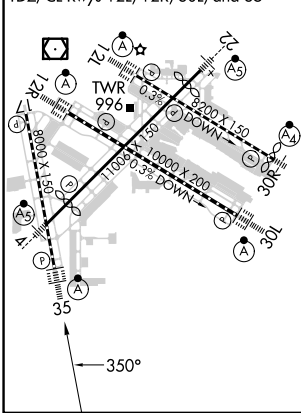
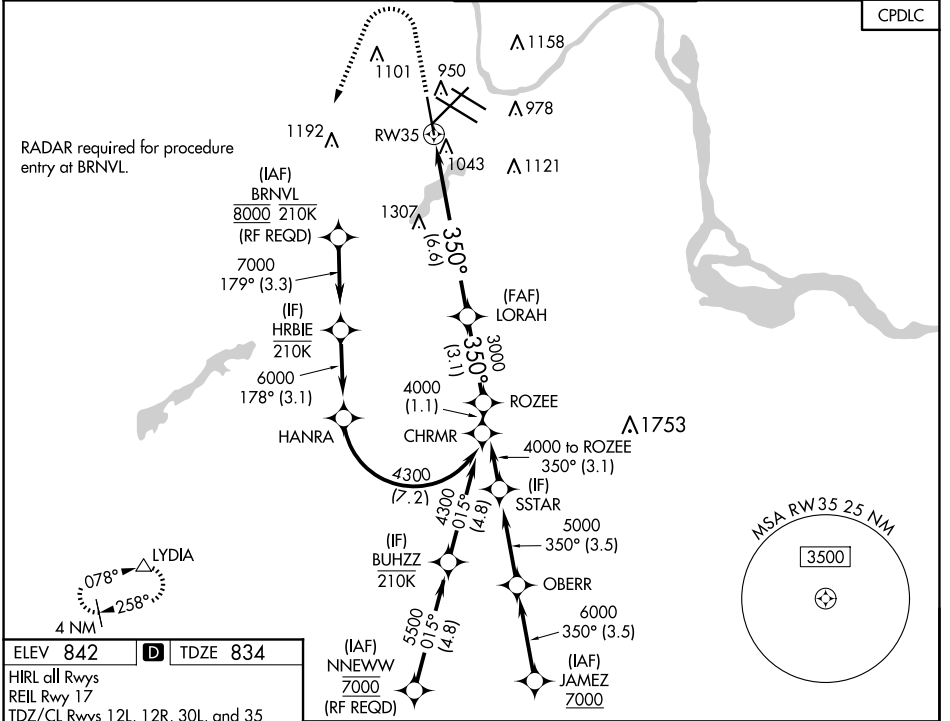
MINNEAPOLIS-ST PAUL INTL/WOLD-CHAMBERLAIN (MSP)

▼ For uncompensated Baro-VNAV systems, procedure NA below -19°C (-2°F) or above 54°C (130°F). For inop ALSF, increase RNP 0.30 all Cats visibility to 1½ miles. GPS required.



MISSED APPROACH: Climb to 1300 then climbing left turn to 3000 direct LYDIA and hold.

D-ATIS ARR 135.35 239.275 DEP 120.8	MINNEAPOLIS APP CON 118.725 335.65 (Rwy 35) 119.3 335.65 (12L-30R, 4-22, 17) 126.95 335.65 (12R-30L)	MINNEAPOLIS TOWER 123.675 273.55 (17-35) 123.95 273.55 (12L-30R) 126.7 273.55 (12R-30L, 4-22)	GND CON N 121.8 348.6 S 121.9 348.6 W 127.925 348.6	CLNC DEL 133.2
---	--	---	---	--------------------------



1300 3000 LYDIA VGS1 and RNAV glidepath not coincident (VGS1 Angle 3.00/TCH 71).

See planview for multiple IF locations.

ROZEE 3000 4000
LYDIA 3000
RW35 3000

6.6 NM 3.1 NM

GP 3.00° TCH 55				
CATEGORY	A	B	C	D
RNP 0.11 DA		1213/40	379 (400-¾)	
RNP 0.16 DA		1291/60	457 (500-1¼)	
RNP 0.30 DA		1345-1¼	511 (600-1¼)	

AUTHORIZATION REQUIRED

RNAV (RNP) Y RWY 35

NC-1, 15 MAY 2025 to 12 JUN 2025

NC-1, 15 MAY 2025 to 12 JUN 2025