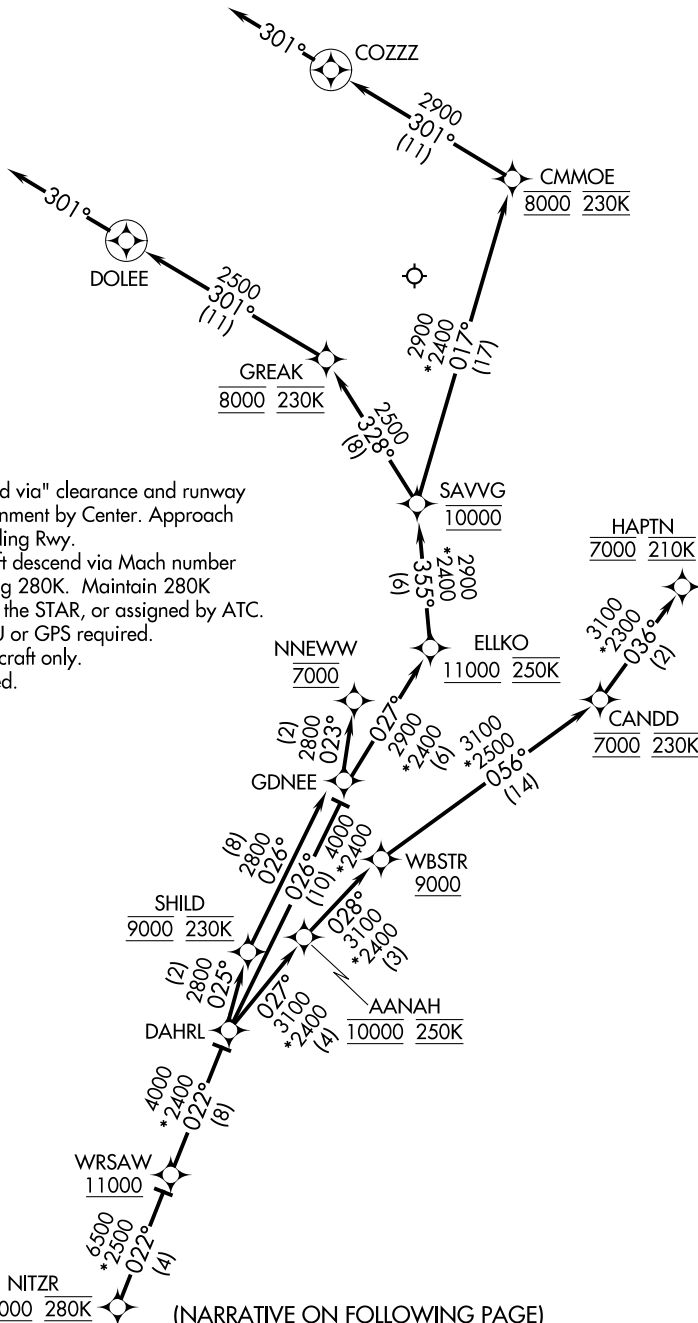


MINNEAPOLIS APP CON  
135.475 335.5  
D-ATIS ARR  
135.35 239.275



- NOTE: Expect "descend via" clearance and runway transition assignment by Center. Approach will assign landing Rwy.
- NOTE: Turbojet aircraft descend via Mach number until intercepting 280K. Maintain 280K until slowed by the STAR, or assigned by ATC.
- NOTE: DME/DME/IRU or GPS required.
- NOTE: For turbojet aircraft only.
- NOTE: RADAR required.
- NOTE: RNAV 1.

NOTE: Chart not to scale.

(NARRATIVE ON FOLLOWING PAGE)