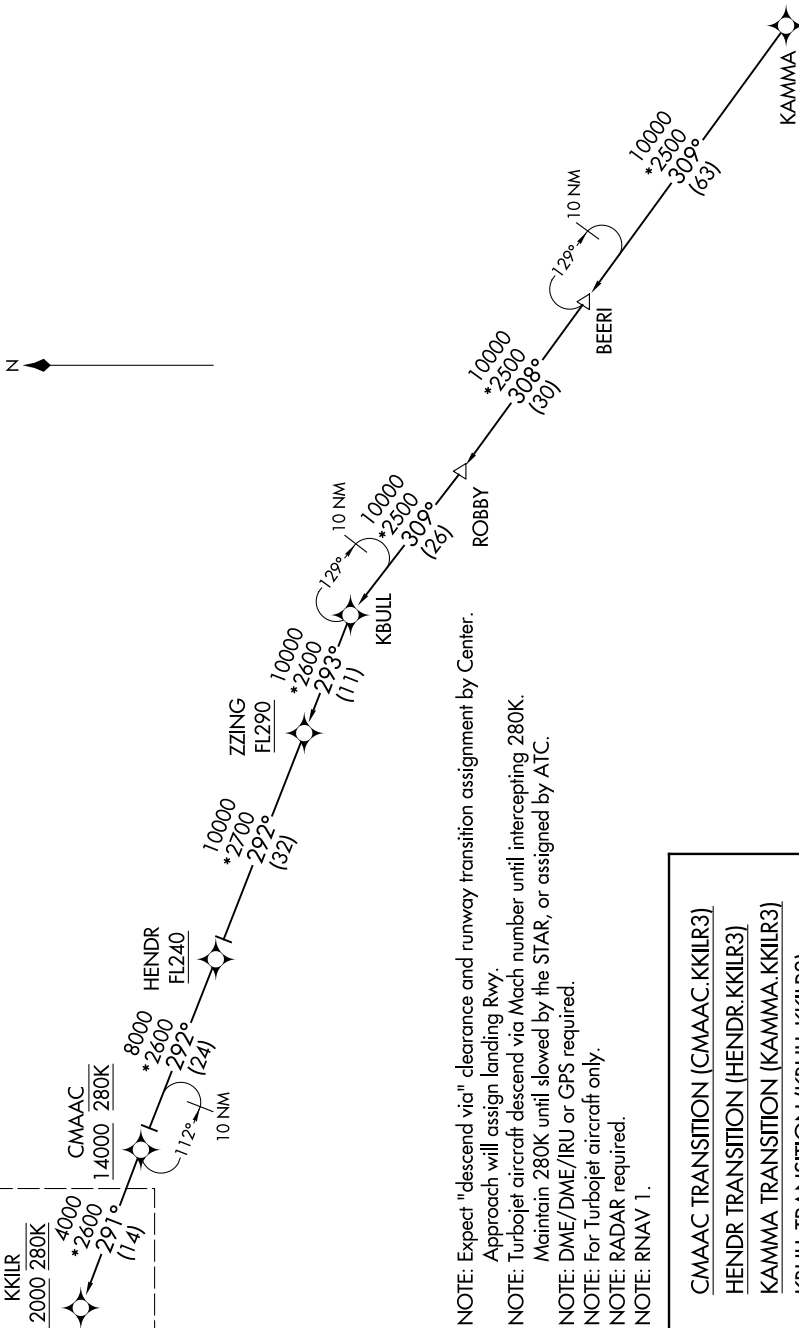


MINNEAPOLIS APP CON  
126.35 335.5  
D-ATIS ARR  
135.35 239.275



NOTE: Expect "descend via" clearance and runway transition assignment by Center.  
Approach will assign landing Rwy.

NOTE: Turbojet aircraft descend via Mach number until intercepting 280K.  
Maintain 280K until slowed by the STAR, or assigned by ATC.

NOTE: DME/DME/IRU or GPS required.

NOTE: For Turbojet aircraft only.

NOTE: RADAR required.

NOTE: RNAV 1.

- CMAAC TRANSITION (CMAAC.KKILR3)
- HENDR TRANSITION (HENDR.KKILR3)
- KAMMA TRANSITION (KAMMA.KKILR3)
- KBULL TRANSITION (KBULL.KKILR3)

(CONTINUED ON FOLLOWING PAGE)

NOTE: Chart not to scale.