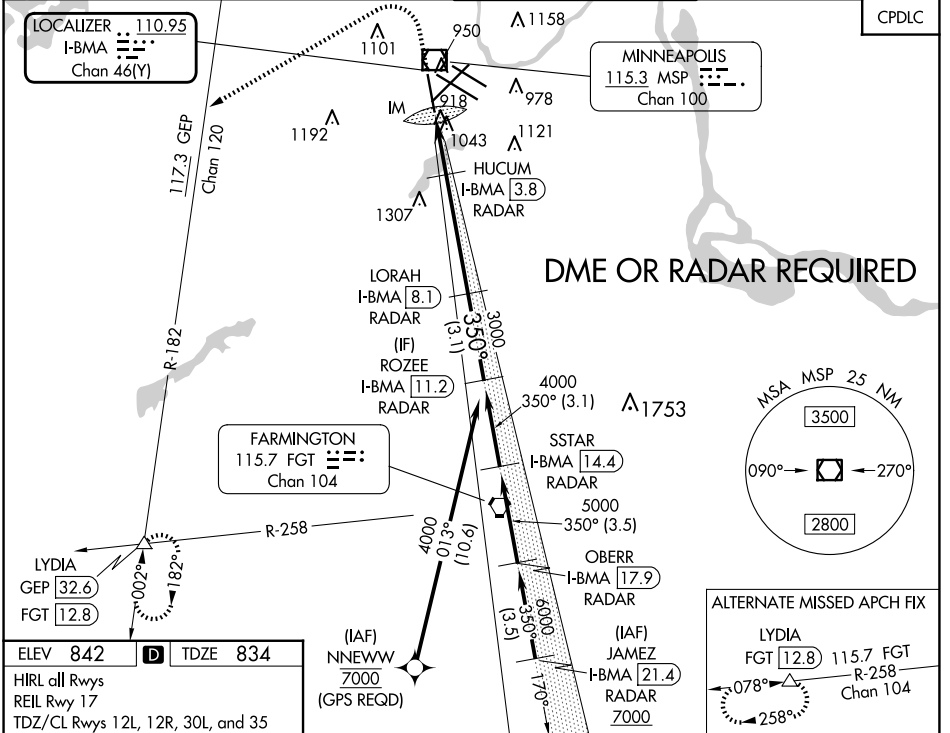


LOC/DME I-BMA 110.95 Chan 46 (Y)	APP CRS 350°	Rwy ldg TDZE Apt Elev	8000 834 842
--	------------------------	-----------------------------	---

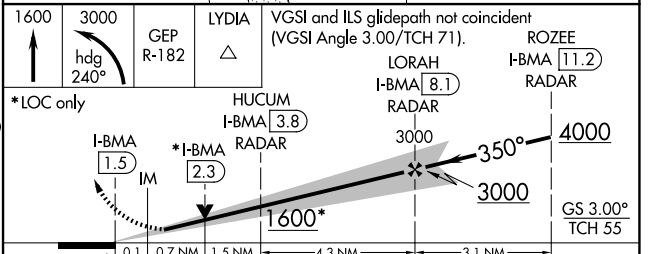
ILS Z or LOC RWY 35

MINNEAPOLIS-ST PAUL INTL/WOLD-CHAMBERLAIN (MSP)

▼ DME or RADAR required. For inop ALS, increase S-ILS 35 Cat E visibility to RVR 4000 and S-LOC 35 Cats C/D/E visibility to RVR 5500. ▲	ALS F-2	MISSED APPROACH: Climb to 1600 then climbing left turn to 3000 on heading 240° and on GEP VORTAC R-182 to LYDIA INT/GEP 32.6 DME and hold.		
	ARR 135.35 239.275 DEP 120.8	MINNEAPOLIS APP CON 118.725 335.65 (Rwy 35) 119.3 335.65 (12L-30R, 4-22, 17) 126.95 335.65 (12R-30L)	MINNEAPOLIS TOWER 123.675 273.55 (17-35) 123.95 273.55 (12L-30R) 126.7 273.55 (12R-30L, 4-22)	GND CON N 121.8 348.6 S 121.9 348.6 W 127.925 348.6



ELEV 842	D	TDZE 834			
HIRL all Rwys REIL Rwy 17 TDZ/CL Rwys 12L, 12R, 30L, and 35					
FAF to MAP 6.6 NM					
Knots	60	90	120	150	180
Min:Sec	6:36	4:24	3:18	2:38	2:12



CATEGORY	A	B	C	D	E
S-ILS 35	1034/18 200 (200-½)				
S-LOC 35	1180/24	346 (400-½)	1180/30 346 (400-¾)		
C CIRCLING	1360-1	518 (600-1)	1460-1¾	1660-2¾	1800-3
			618 (700-1¾)	818 (900-2¾)	958 (1000-3)

NC-1, 15 MAY 2025 to 12 JUN 2025

NC-1, 15 MAY 2025 to 12 JUN 2025