

LOC/DME I-HKZ 110.3 Chan 40	APP CRS 121°	Rwy Idg TDZE 842 Apt Elev 842	10000
---	------------------------	---	--------------

ILS or LOC RWY 12R

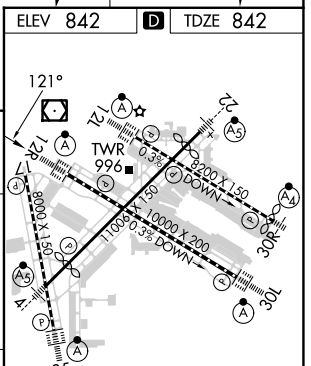
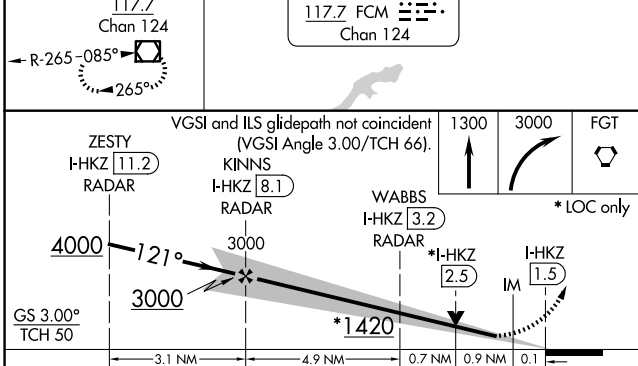
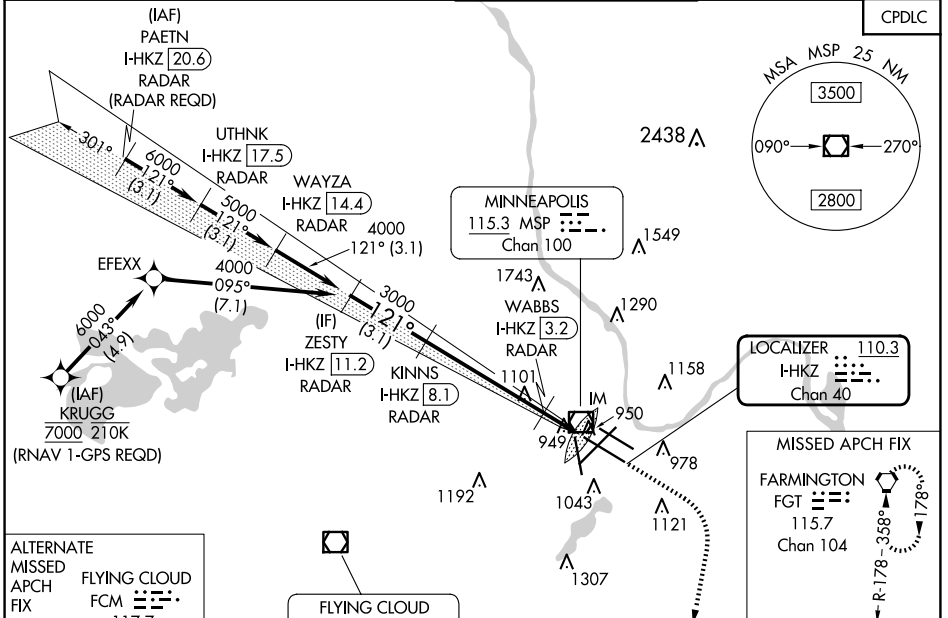
MINNEAPOLIS-ST PAUL INTL/WOLD-CHAMBERLAIN (MSP)

⚠ DME or RADAR required. For inop ALS, increase S-ILS 12R Cat E visibility to RVR 4000, and S-LOC 12R Cat E visibility to RVR 6000. Simultaneous approach authorized with Rwy 12L.

ALSF-2

MISSED APPROACH: Climb to 1300 then climbing right turn to 3000 direct FGT VORTAC and hold.

D-ATIS ARR 135.35 239.275 DEP 120.8	MINNEAPOLIS APP CON 118.725 335.65 (Rwy 35) 119.3 335.65 (12L-30R, 4-22, 17) 126.95 335.65 (12R-30L)	MINNEAPOLIS TOWER 123.675 273.55 (17-35) 123.95 273.55 (12L-30R) 126.7 273.55 (12R-30L, 4-22)	GND CON N 121.8 348.6 S 121.9 348.6 W 127.925 348.6	CLNC DEL 133.2
---	--	---	---	--------------------------



CATEGORY	A	B	C	D	E	
S-ILS 12R	1042/18 200 (200-½)					
S-LOC 12R	1240/24	398 (400-½)	1240/35 398 (400-¾)			
CIRCLING	1360-1	518 (600-1)	1460-1¾ 618 (700-1¾)	1660-2¾ 818 (900-2¾)	1800-3 958 (1000-3)	
	Knots	60	90	120	150	180
	Min:Sec	6:36	4:24	3:18	2:38	2:12

NC-1, 15 MAY 2025 to 12 JUN 2025

NC-1, 15 MAY 2025 to 12 JUN 2025