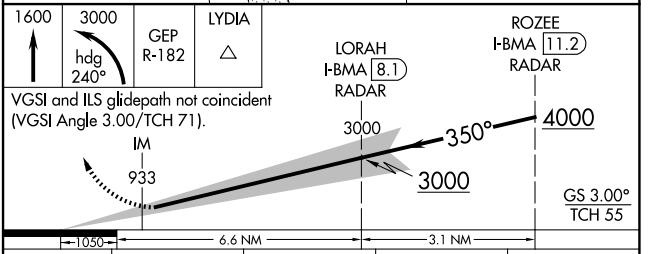
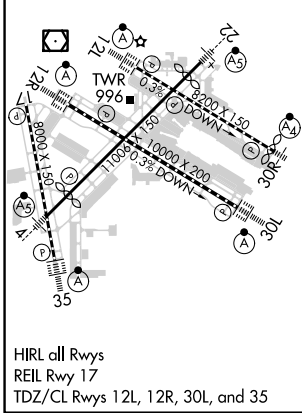
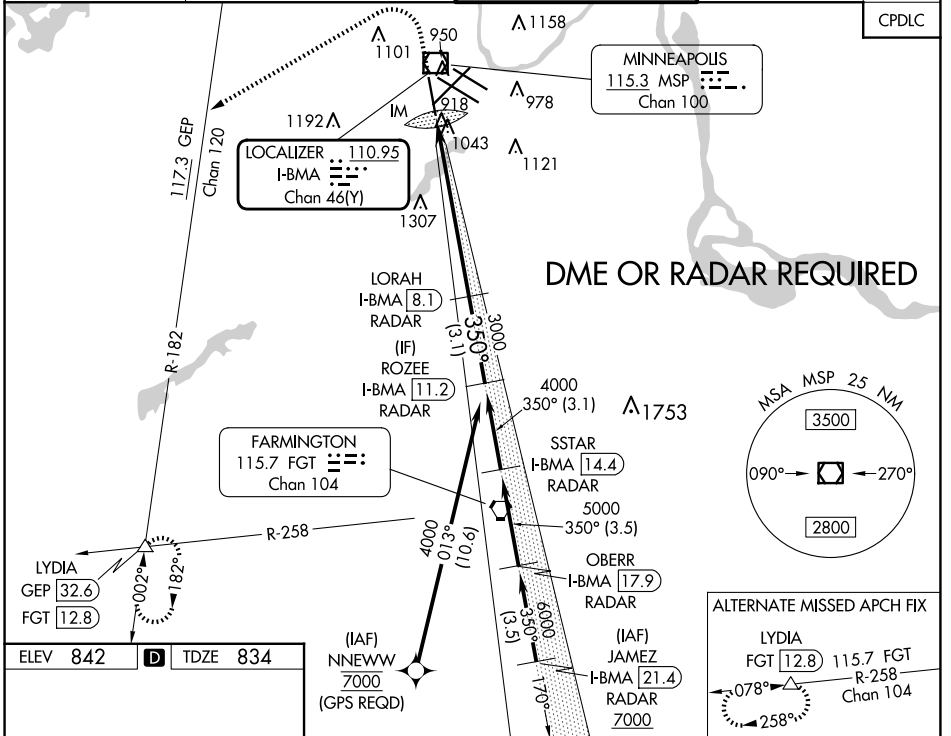


LOC/DME I-BMA 110.95 Chan 46 (Y)	APP CRS 350°	Rwy Ldg TDZE Apt Elev	8000 834 842
--	------------------------	-----------------------------	---

ILS RWY 35 (CAT II & III)

MINNEAPOLIS-ST PAUL INTL/WOLD-CHAMBERLAIN (MSP)

DME or RADAR required.		ALSF-2 	MISSED APPROACH: Climb to 1600 then climbing left turn to 3000 on heading 240° and on GEP VORTAC R-182 to LYDIA INT/GEP 32.6 DME and hold.	
D-ATIS ARR 135.35 239.275 DEP 120.8	MINNEAPOLIS APP CON 118.725 335.65 (Rwy 35) 119.3 335.65 (12L-30R, 4-22, 17) 126.95 335.65 (12R-30L)	MINNEAPOLIS TOWER 123.675 273.55 (17-35) 123.95 273.55 (12L-30R) 126.7 273.55 (12R-30L, 4-22)	GND CON N 121.8 348.6 S 121.9 348.6 W 127.925 348.6	CLNC DEL 133.2



ELEV 842 D TDZE 834	1600 3000 GEP R-182 LYDIA	LORAH I-BMA [8.1] RADAR	ROZEE I-BMA [11.2] RADAR
VGS I and ILS glidepath not coincident (VGS I Angle 3.00/TCH 71).			
CATEGORY	A	B	C
S-ILS 35	CAT II RA 106/12 110 DA 944		
S-ILS 35	CAT III RVR 06		
CATEGORY II & III ILS - SPECIAL AIRCREW & AIRCRAFT CERTIFICATION REQUIRED			

NC-1, 15 MAY 2025 to 12 JUN 2025

NC-1, 15 MAY 2025 to 12 JUN 2025