

LOC/DME I-BAO 111.5 Chan 52	APP CRS 326°	Rwy Idg TDZE Apt Elev	6109 704 705
--	------------------------	-----------------------------	---

ILS or LOC RWY 32

ST PAUL DOWNTOWN HOLMAN FLD (STP)

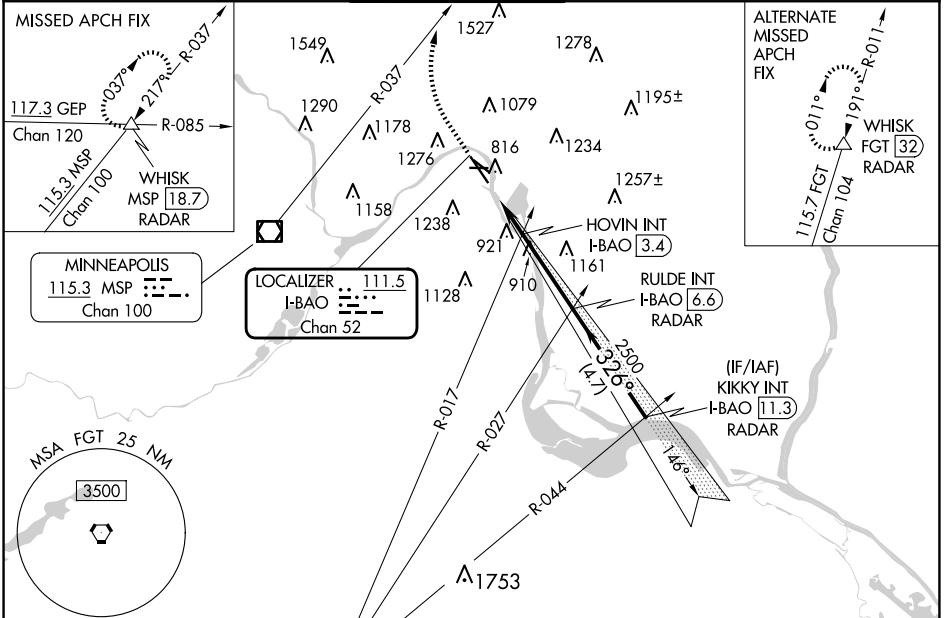
DME or RADAR required. RADAR required for procedure entry.

MISSED APPROACH: Climb to 1300 then climbing right turn to 4000 on heading 010° and MSP R-037 to WHISK INT/MSP 18.7 DME/RADAR and hold.

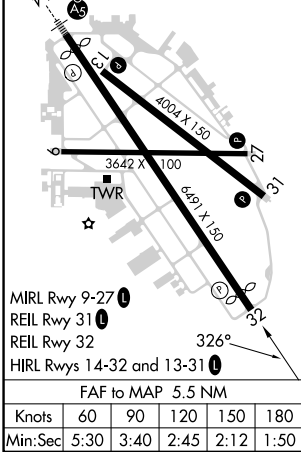
⚠ Rwy 32 helicopter visibility reduction below RVR 4000 NA. Inop table does not apply to S-ILS 32 all Cats and S-LOC all Cats. HOVIN fix minimums: Inop table does not apply to Cats A/B. For inop ALS, increase Cats C/D visibility to 1 ½ SM.

❄ -30°C

ATIS 118.35	MINNEAPOLIS APP CON 121.2 335.65	ST. PAUL TOWER * 119.1 (CTAF) 0 257.8	GND CON 121.675	CLNC DEL 121.675	UNICOM 122.95
-----------------------	--	---	---------------------------	----------------------------	-------------------------



ELEV 705	D	TDZE 704
----------	----------	----------



NC-1, 15 MAY 2025 to 12 JUN 2025

NC-1, 15 MAY 2025 to 12 JUN 2025