

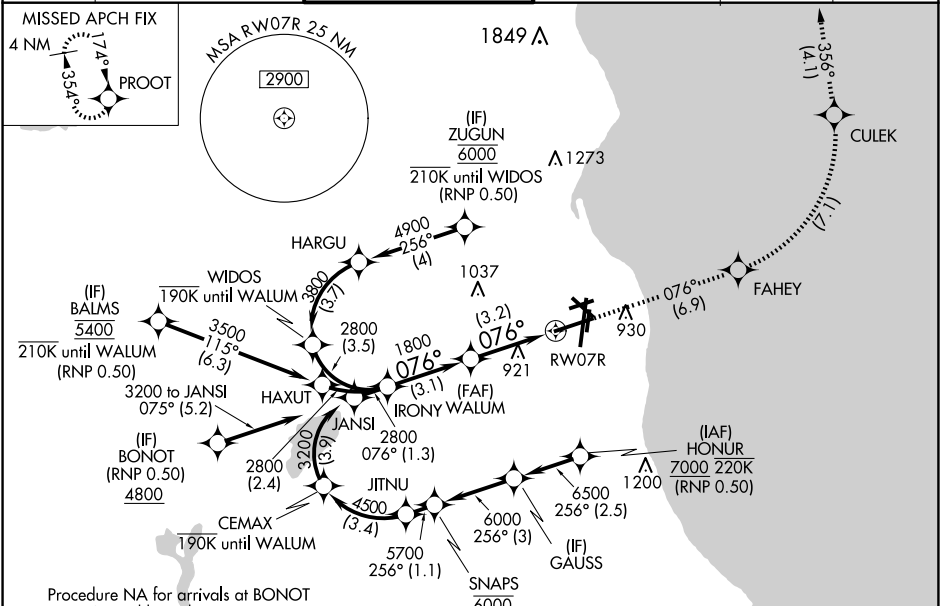
APP CRS	Rwy Idg	<b>8012</b>
<b>076°</b>	TDZE	<b>729</b>
	Apt Elev	<b>729</b>

# RNAV (RNP) Y RWY 7R

GENERAL MITCHELL INTL (MKE)

RF required. RNP AR APCH.		MALSR 	MISSED APPROACH: Climb to 3700 on the RNAV missed approach route to PROOT and hold.
⚠ For uncompensated Baro-VNAV systems, procedure NA below -20°C or above 54°C. For inop ALS, increase RNP 0.10 all Cats visibility to 1¼. For inop ALS, increase RNP 0.15 all Cats visibility to 1½. For inop ALS, increase RNP 0.30 all Cats visibility to 1¾.			

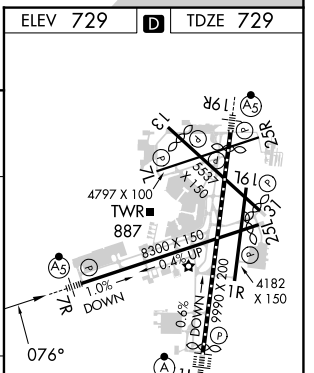
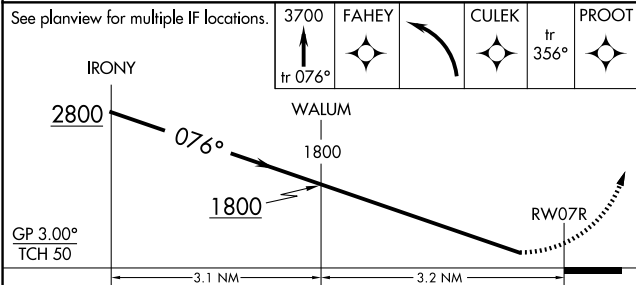
D-ATIS	MILWAUKEE APP CON	MILWAUKEE TOWER	GND CON	CLNC DEL	CPDLC
<b>126.4</b>	<b>126.5 307.0</b>	<b>124.575 269.05</b>	<b>121.8 263.125</b>	<b>120.8</b>	



EC-3, 15 MAY 2025 to 12 JUN 2025

EC-3, 15 MAY 2025 to 12 JUN 2025

ELEV 729	<b>D</b>	TDZE 729
----------	----------	----------



CATEGORY	A	B	C	D
RNP 0.10 DA		1119/45	390 (400-¾)	
RNP 0.15 DA		1203/60	474 (500-1¼)	
RNP 0.30 DA		1255-1¾	526 (600-1¾)	

**AUTHORIZATION REQUIRED**

TDZ/CL Rwy 1L  
 REIL Rwy 1R, 7L,  
 13, 25L, 25R, and 31  
 HIRL Rwy 1L-19R and 7R-25L  
 MIRL Rwy 1R-19L, 13-31 and 7L-25R