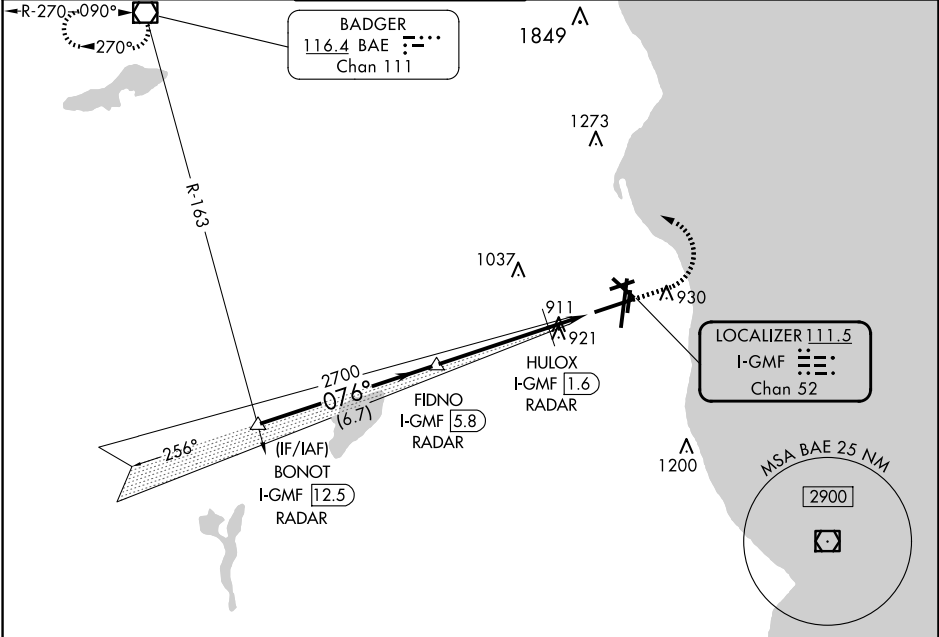


|   |                        |   |
|---|------------------------|---|
| LOC/DME I-GMF<br><b>111.5</b><br>Chan <b>52</b> | APP CRS<br><b>076°</b> | Rwy Idg <b>8012</b><br>TDZE <b>729</b><br>Apt Elev <b>729</b> |
|---|------------------------|---|

# ILS or LOC RWY 7R

GENERAL MITCHELL INTL (MKE)

|  |   |  |  |                          |       |
|--|---|--|--|--------------------------|-------|
| RADAR required for procedure entry. DME or RADAR required. |   | MALSR<br>                                | MISSED APPROACH: Climb to 2900 then left turn direct BAE VOR/DME and hold. |                          |       |
| # RVR 1800 authorized with use of FD or AP or HUD to DA.   |   |  |  |                          |       |
| D-ATIS<br><b>126.4</b>                                     | MILWAUKEE APP CON<br><b>126.5 307.0</b> | MILWAUKEE TOWER<br><b>124.575 269.05</b> | GND CON<br><b>121.8 263.125</b>  | CLNC DEL<br><b>120.8</b> | CPDLC |



EC-3, 15 MAY 2025 to 12 JUN 2025

EC-3, 15 MAY 2025 to 12 JUN 2025

|                        |                    |   |                     |
|------------------------|--------------------|---|---------------------|
| ELEV 729               |                    | TDZE 729  |                     |
| BONOT I-GMF 12.5 RADAR |                    | VGS1 and ILS glidepath not coincident (VGS1 Angle 3.00/TCH 63). |                     |
| 2900                   |                    | 2900  |                     |
| GS 3.00° TCH 50        |                    | * I-GMF 1   |                     |
| 076°                   |                    | * I-GMF DME ANTENNA   |                     |
| 2700                   |                    | * I-GMF 1   |                     |
| 6.7 NM                 |                    | 1.2 NM  |                     |
| 4.2 NM                 |                    | 0.6 NM  |                     |
| CATEGORY               | A                  | B   | C                   |
| S-ILS 7R #             | 929/24 200 (200-½) |   |                     |
| S-LOC 7R               | 1180/24            | 451 (500-½)   | 1180/45 451 (500-¾) |
| CIRCLING               | 1240-1             | 511 (600-1)   | 1240-1½ 631 (700-2) |

