

LOC/DME I-MKE 110.3 Chan 40	APP CRS 011°	Rwy Idg TDZE Apt Elev	1L 9080 704 728	1R 4182 678 728
--	------------------------	-----------------------------	---	---

ILS or LOC RWY 1L

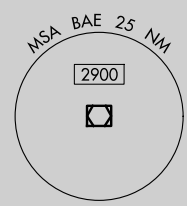
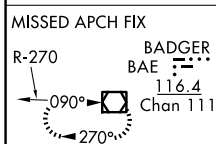
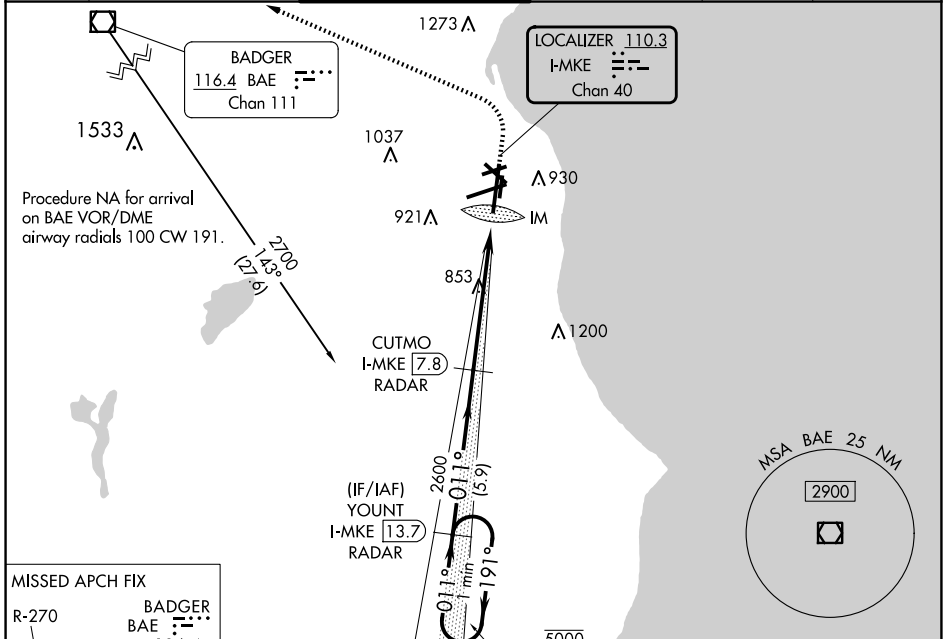
GENERAL MITCHELL INTL (MKE)

DME or RADAR required.

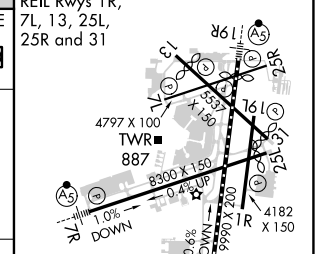
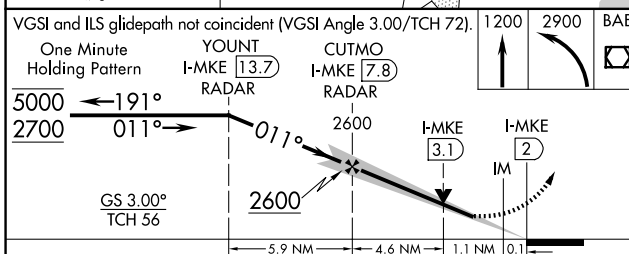


MISSED APPROACH: Climb to 1200 then climbing left turn to 2900 direct BAE VOR/DME and hold.

D-ATIS 126.4	MILWAUKEE APP CON 126.5 307.0	MILWAUKEE TOWER 124.575 269.05	GND CON 121.8 263.125	CLNC DEL 120.8	CPDLC
------------------------	---	--	---------------------------------	--------------------------	-------



ELEV 728	D	TDZE 1L 704
TDZ/CL Rwy 1L		TDZE 1R 678
REIL Rwys 1R, 7L, 13, 25L, 25R and 31		



CATEGORY	A	B	C	D
S-ILS 1L	904/18 200 (200-½)			
S-LOC 1L	1140/24 436 (500-½)		1140/40 436 (500-¾)	
SIDESTEP 1R	1140-1 462 (500-1)		1140-1½ 462 (500-2)	1140-2 462 (500-2)
C CIRCLING	1240-1 512 (600-1)		1240-1½ 512 (600-1½)	1360-2 632 (700-2)

Knots	60	90	120	150	180
Min:Sec	5:48	3:52	2:54	2:19	1:56

EC-3, 15 MAY 2025 to 12 JUN 2025

EC-3, 15 MAY 2025 to 12 JUN 2025