

HI-VOR or TACAN RWY 34L

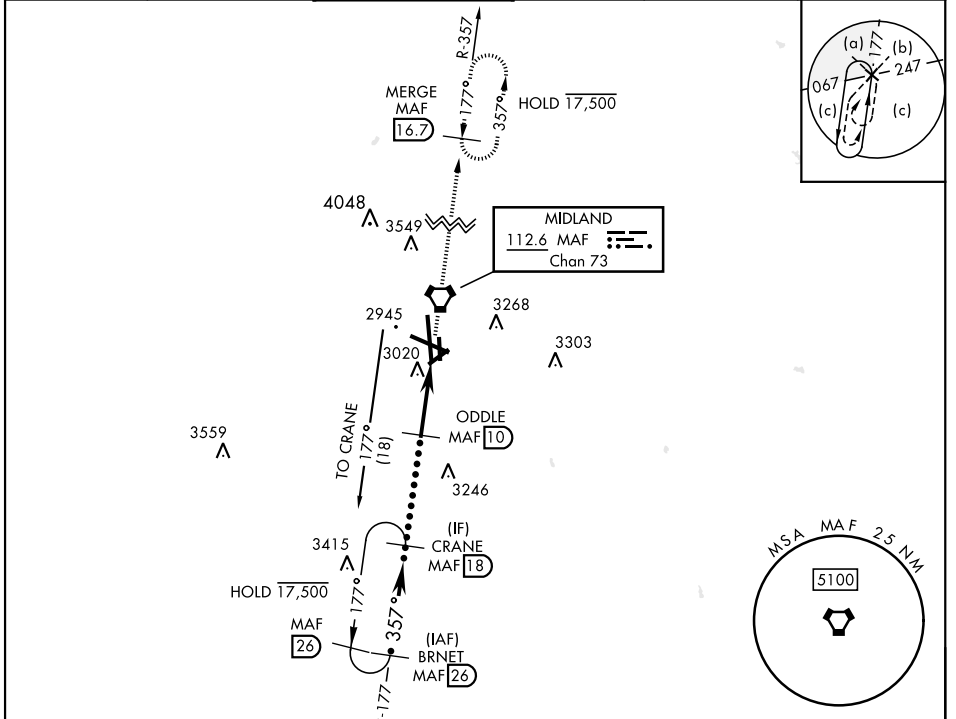
VORTAC MAF 112.6 Chan 73	APCH CRS 357°	Rwy ldg TDZE Arprt Elev 9501 2858 2872
--	-------------------------	--

[USAF] MIDLAND INTL AIR AND SPACE PORT (KMAF)

DME required
* Circling Rwy 16L not authorized at night.

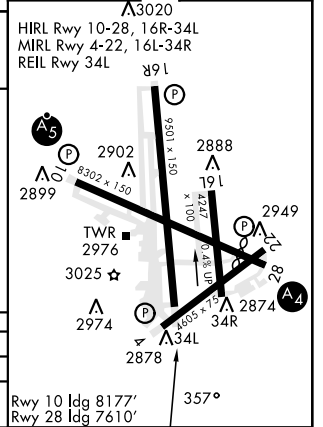
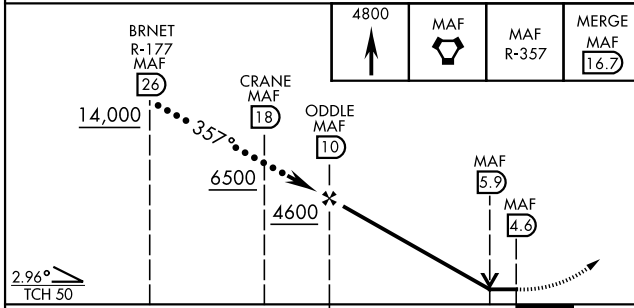
MISSED APPROACH: Climb to 4800 direct MAF VORTAC and on MAF VORTAC R-357 to MERGE/MAF 16.7 DME and hold.

ATIS ★ 126.8 235.975	APP CON ★ 124.6 290.4	TOWER ★ 118.7(CTAF) 273.45	GND CON 121.9 348.6	CLNC DEL 118.05 317.65	UNICOM 122.95
--------------------------------	---------------------------------	--------------------------------------	-------------------------------	----------------------------------	-------------------------



EMERG SAFE ALT 100 NM 7000

ELEV 2872	TDZE 2858
-----------	-----------



CATEGORY	C	D	E
S-34L	3320-1 ³ / ₈	462	(500-1 ³ / ₈)
CIRCUING*	3440-1 ¹ / ₂ 568 (600-1 ¹ / ₂)	3520-2 648 (700-2)	3600-2 ¹ / ₂ 728 (800-2 ¹ / ₂)

MIDLAND, TEXAS 31° 57' N-102° 12' W MIDLAND INTL AIR AND SPACE PORT (KMAF)

Amtd 3 20JUL17

HI-VOR or TACAN RWY 34L

SC-3, 15 MAY 2025 to 12 JUN 2025

SC-3, 15 MAY 2025 to 12 JUN 2025