

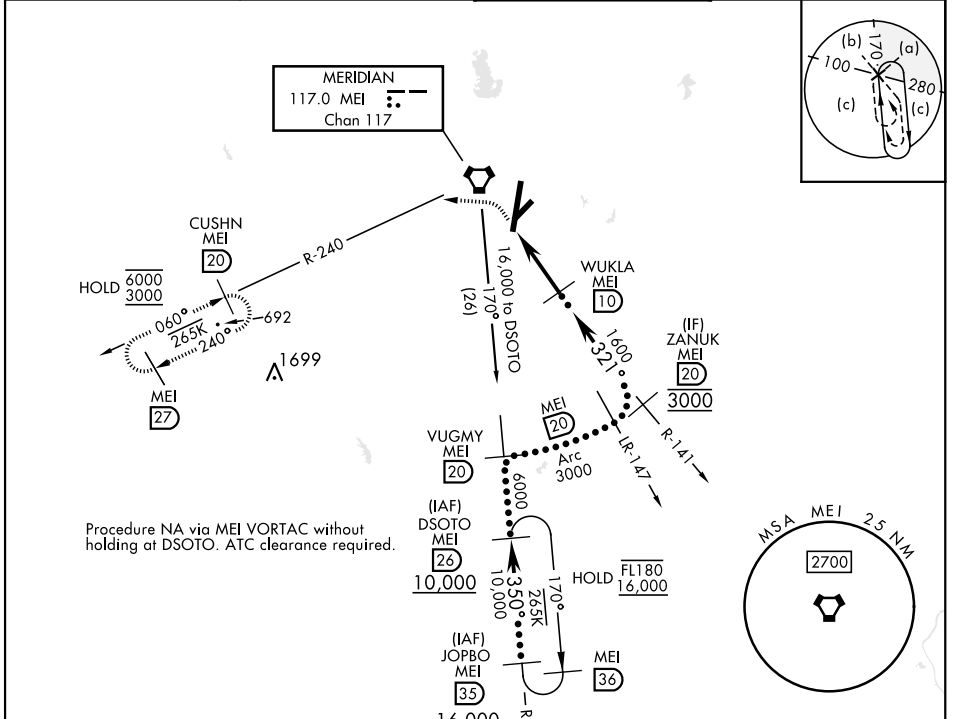
VORTAC MEI <b>117.0</b> Chan <b>117</b>	APCH CRS <b>321°</b>	Rwy ldg TDZE Arpt Elev <b>N/A</b> <b>N/A</b> <b>298</b>	[USAF]	KEY FLD (KMEI)
---	-------------------------	--	--------	----------------

DME required

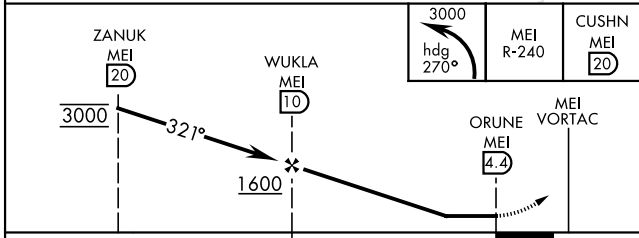
\* Circling to Rwy 22 NA at night. Circling NA SE of Rwy 1 and 22.

MISSED APPROACH: Climbing left turn to 3000 on heading 270° and MEI VORTAC R-240 to CUSHN/ MEI 20 DME and hold.

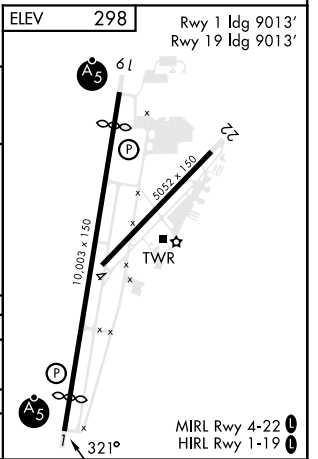
ATIS <b>126.475 291.675</b>	MERIDIAN APP CON <b>120.5 269.325</b>	TOWER ★ <b>133.975</b> (CTAF) <b>0 257.8</b>	GND CON <b>121.9 348.6</b>
--------------------------------	--	---	-------------------------------



EMERG SAFE ALT 100 NM 3700	ELEV 298	Rwy 1 ldg 9013' Rwy 19 ldg 9013'
----------------------------	----------	-------------------------------------



CATEGORY	C	D	E
CIRCLING*	1140-2½ 842 (900-2½)	1140-2¾ 842 (900-2¾)	1140-3 842 (900-3)
HATTIESBURG-LAUREL RGNL ALTIMETER SETTING			
CIRCLING*	1280-3	982	(1000-3)



SC-4, 15 MAY 2025 to 12 JUN 2025

SC-4, 15 MAY 2025 to 12 JUN 2025