


RNAV (GPS) Z RWY 18R

MEMPHIS INTL (MEM)

| | | | |
|--|------------------------|-----------------------------|---|
| WAAS CH 56606 W18A | APP CRS 180° | Rwy Idg TDZE Apt Elev | 9320 295 341 |
|--|------------------------|-----------------------------|---|

RNP APCH - GPS.

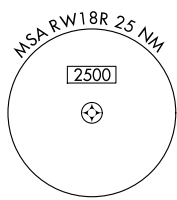
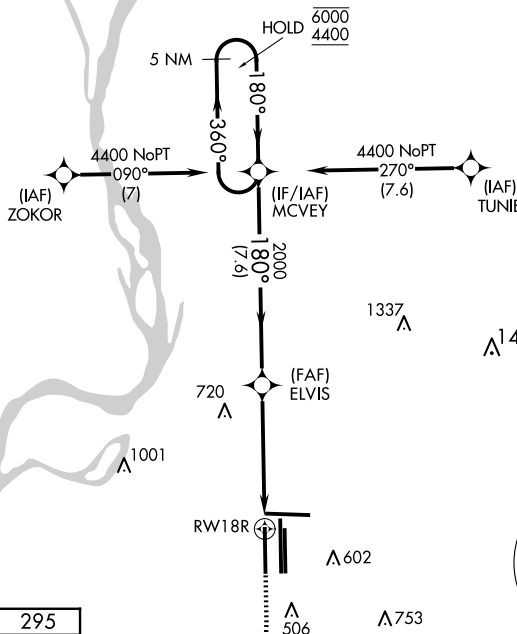
Simultaneous approach authorized. For uncompensated Baro-VNAV systems, LNAV/VNAV NA below -15°C or above 54°C. LNAV procedure NA during simultaneous operations. Use of FD or AP required during simultaneous operations. For inop ALS, increase LNAV/VNAV all Cats visibility to 1 3/8 SM.

MALSR 

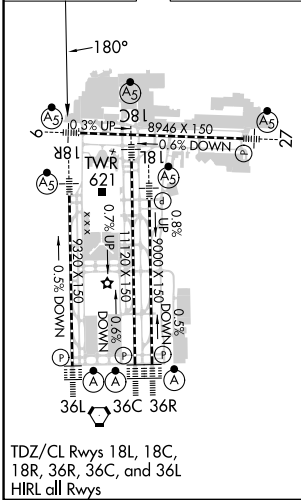
MISSED APPROACH: Climb to 900 then climbing right turn to 5000 direct JEPOB and hold.

| | | |
|--------------------------------|--|--|
| MEMPHIS APP CON | MEMPHIS TOWER | GND CON |
| 119.1 291.6 (176°-355°) | (Rwy 9-27) 118.3 257.8 | (Rwy 9-27) 121.0 379.2 |
| 125.8 338.3 (356°-175°) | (Rwys 18C-36C, 18L-36R) 119.7 257.8 | (Rwys 18C-36C, 18L-36R) 121.9 379.2 |
| | (Rwy 18R-36L) 128.425 257.8 | (Rwy 18R-36L) 121.65 379.2 |

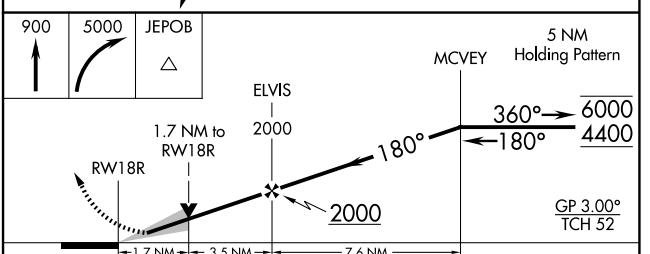
| | | |
|-------------------------|--------------------------|-------|
| D-ATIS 127.75 | CLNC DEL 125.2 | CPDLC |
|-------------------------|--------------------------|-------|



| | | |
|-----------------|----------|-----------------|
| ELEV 341 | D | TDZE 295 |
|-----------------|----------|-----------------|



MEMPHIS, TENNESSEE
Amdt 2G 07OCT21



| CATEGORY | A | B | C | D |
|-------------------|--------|---------------|-----------------|-----------------|
| LPV DA | DA | 495/18 | 200 (200-1/2) | |
| LNAV/VNAV DA | DA | 874-1 1/4 | 579 (600-1 1/4) | |
| LNAV MDA | 880/24 | 585 (600-1/2) | 880-1 1/4 | 585 (600-1 1/4) |
| C CIRCLING | 940-1 | 599 (600-1) | 940-1 3/4 | 1020-2 1/4 |
| | | | 599 (600-1 3/4) | 679 (700-2 1/4) |

SE-1, 15 MAY 2025 to 12 JUN 2025

SE-1, 15 MAY 2025 to 12 JUN 2025