


RNAV (RNP) Y RWY 18C

MEMPHIS INTL (MEM)

APP CRS	Rwy Idg	11120
180°	TDZE	290
	Apt Elev	341

▼ For uncompensated Baro-VNAV systems, procedure NA below -10°C (14°F) or above 54°C (130°F). GPS required. For inop ALS, increase RNP 0.30* all Cats visibility to 1½ SM and RNP 0.30 all Cats visibility to 1½ SM. Simultaneous approach authorized. Use of FD or AP required during simultaneous operations.

MALSR

MISSED APPROACH: Climb to 5000 on track 180° to CEDEN on track 137° to KEEZE and hold, continue climb-in-hold to 5000. *Missed approach requires a minimum climb of 400 feet per NM to 1000.

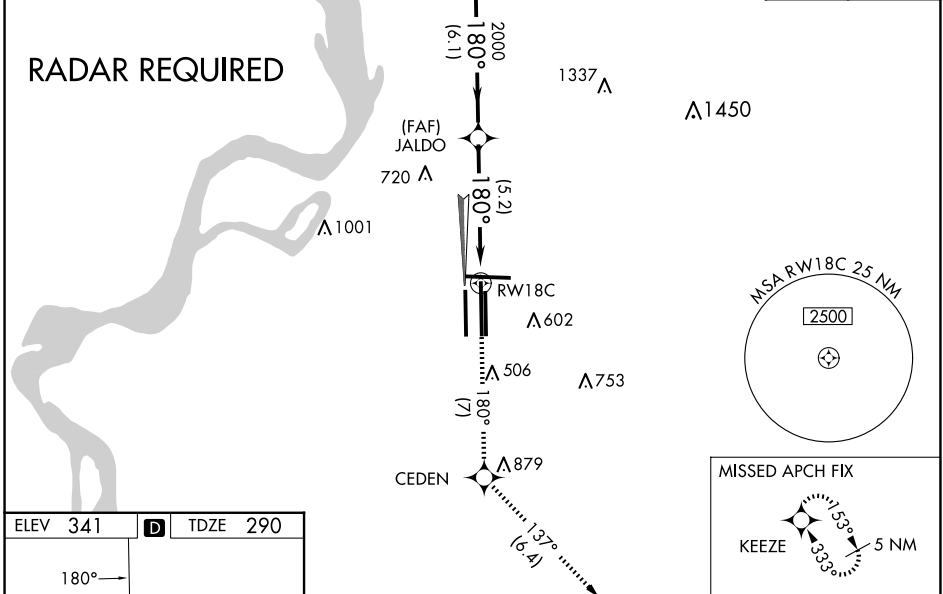
MEMPHIS APP CON	
119.1 291.6 (176°-355°)	
125.8 338.3 (356°-175°)	

MEMPHIS TOWER	
(Rwy 9-27) 118.3 257.8	
(Rwys 18C-36C, 18L-36R) 119.7 257.8	
(Rwy 18R-36L) 128.425 257.8	

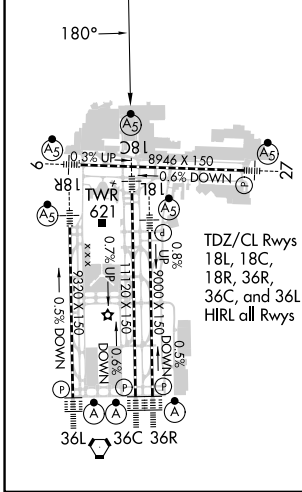
GND CON	
(Rwy 9-27) 121.0 379.2	
(Rwys 18C-36C, 18L-36R) 121.9 379.2	
(Rwy 18R-36L) 121.65 379.2	

D-ATIS
127.75

CLNC DEL	CPDLC
125.2	



ELEV 341	D	TDZE 290
----------	----------	----------



5000	tr 180°	CEDEN	tr 137°	KEEZE	LAURI
		JALDO			3900
		RWY 18C	2000	180°	2000
			5.2 NM	6.1 NM	
					GP 3.00° TCH 54
CATEGORY	A	B	C	D	
RNP 0.30 DA*	655/35 365 (400-%)				
RNP 0.30 DA	747/54 457 (500-1)				

AUTHORIZATION REQUIRED

SE-1, 15 MAY 2025 to 12 JUN 2025

SE-1, 15 MAY 2025 to 12 JUN 2025