

| | | | |
|---|------------------------|---|---|
| LOC/DME I-MYO 111.35 Chan 50 (Y) | APP CRS 360° | Rwy Idg TDZE 335 Apt Elev 341 | 9000 335 341 |
|---|------------------------|---|---|

ILS or LOC RWY 36R

MEMPHIS INTL (MEM)

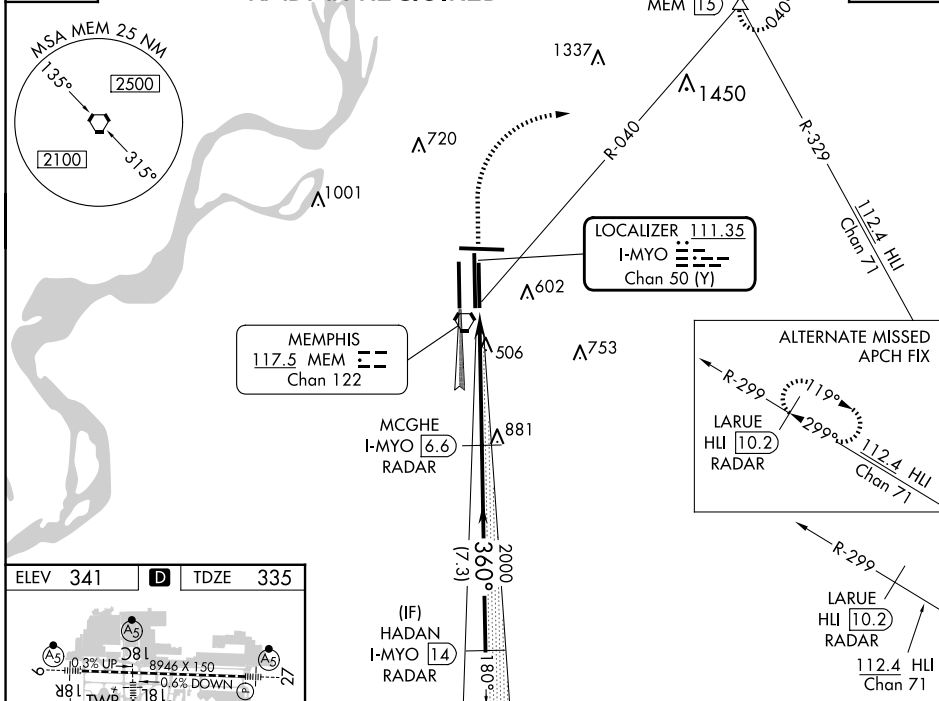
⚠ For inoperative ALSF, increase S-ILS 36R Cat E visibility to RVR 4000 and S-LOC 36R Cat E visibility to 1½. Simultaneous approach authorized with Rwy 36L. DME or RADAR required.

ALSF-2 MISSED APPROACH: Climb to 1000 then climbing right turn to 5000 via heading 070° and MEM VORTAC R-040 to OROCU INT/MEM VORTAC 1.5 DME and hold, continue climb-in-hold to 5000.

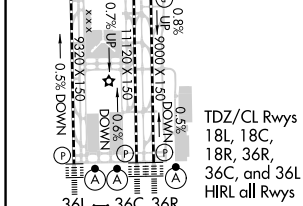
| | | | |
|---|--|---|--------------------------|
| MEMPHIS APP CON 119.1 291.6 (176°-355°) 125.8 338.3 (356°-175°) | MEMPHIS TOWER (Rwy 9-27) 118.3 257.8 (Rwys 18C-36C, 18L-36R) 119.7 257.8 (Rwy 18R-36L) 128.425 257.8 | GND CON (Rwy 9-27) 121.0 379.2 (Rwys 18C-36C, 18L-36R) 121.9 379.2 (Rwy 18R-36L) 121.65 379.2 | CLNC DEL 125.2 |
|---|--|---|--------------------------|

D-ATIS
127.75

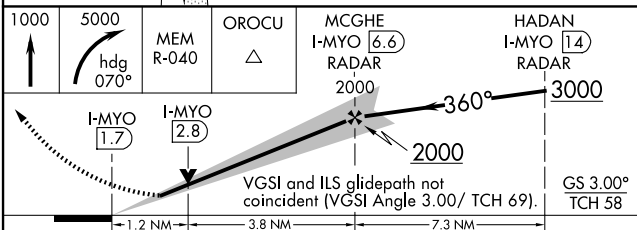
RADAR REQUIRED



| | | |
|----------|----------|----------|
| ELEV 341 | D | TDZE 335 |
|----------|----------|----------|



| | | | | | |
|-----------------|------|------|------|------|------|
| FAF to MAP 5 NM | | | | | |
| Knots | 60 | 90 | 120 | 150 | 180 |
| Min:Sec | 5:00 | 3:20 | 2:30 | 2:00 | 1:40 |



| | | | | | |
|-------------------|--------------------|-------------|---------------------|----------------------|----------------------|
| CATEGORY | A | B | C | D | E |
| S-ILS 36R | 535/18 200 (200-½) | | 535/24 200 (200-½) | | |
| S-LOC 36R | 760/24 | 425 (500-½) | 760/40 | 425 (500-¾) | 760/50 425 (500-1) |
| C CIRCLING | 940-1 599 (600-1) | | 940-1½ 599 (600-1½) | 1020-2¼ 679 (700-2¼) | 1140-2¾ 799 (800-2¾) |

SE-1, 15 MAY 2025 to 12 JUN 2025

SE-1, 15 MAY 2025 to 12 JUN 2025