

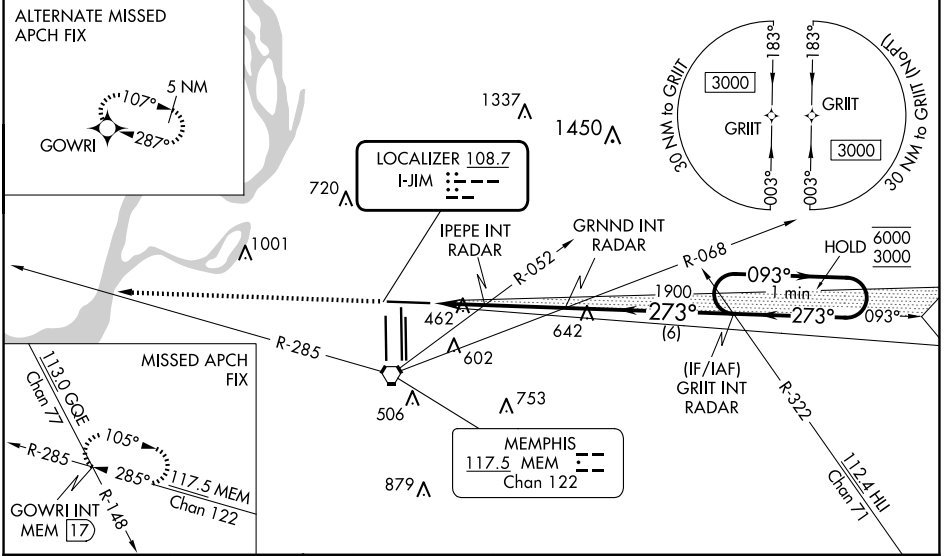
LOC I-JIM <b>108.7</b>	APP CRS <b>273°</b>	Rwy Idg TDZE Apt Elev	<b>8946</b> <b>292</b> <b>341</b>
---------------------------	------------------------	-----------------------------	---

# ILS or LOC RWY 27

MEMPHIS INTL (MEM)

RNAV 1-GPS or RADAR required for procedure entry.		MALSR	MISSED APPROACH: Climb to 5000 and intercept MEM VORTAC R-285 to GOWRI INT/17 DME and hold, continue climb-in-hold to 5000.
▼ For inop ALS, increase S-ILS Cat E visibility to RVR 4000, and S-LOC Cat E visibility to 2 SM, IPEPE fix minimums S-LOC Cat E visibility to 1/4 SM. ▲ *RVR 1800 authorized with use of FD or AP or HUD to DA.			
MEMPHIS APP CON <b>119.1 291.6</b> (176°-355°) <b>125.8 338.3</b> (356°-175°)		MEMPHIS TOWER (Rwy 9-27) <b>118.3 257.8</b> (Rwys 18C-36C, 18L-36R) <b>119.7 257.8</b> (Rwy 18R-36L) <b>128.425 257.8</b>	GND CON (Rwy 9-27) <b>121.0 379.2</b> (Rwys 18C-36C, 18L-36R) <b>121.9 379.2</b> (Rwy 18R-36L) <b>121.65 379.2</b>

D-ATIS <b>127.75</b>	CLNC DEL <b>125.2</b>	CPDLC
-------------------------	--------------------------	-------



ELEV 341	<b>D</b>	TDZE 292	5000	MEM R-285	GOWRI INT	GRNND INT RADAR	VGSI and ILS glidepath not coincident (VGSI Angle 3.00/TCH 69).	GRIIT INT RADAR	One Minute Holding Pattern																																										
			IPEPE INT RADAR 1900 GRNND INT RADAR 1900 GRIIT INT RADAR 1900 980 273° 093° 6000 273° 3000 GS 3.00° TCH 54 2 NM 2.9 NM 6 NM																																																
HIRL all Rwys TDZ/CL Rwys 18L, 18C, 18R, 36R, 36C, and 36L			<table border="1"> <thead> <tr> <th>CATEGORY</th> <th>A</th> <th>B</th> <th>C</th> <th>D</th> <th>E</th> </tr> </thead> <tbody> <tr> <td>S-ILS 27 *</td> <td colspan="5">492/24 200 (200-1/2)</td> </tr> <tr> <td>S-LOC 27</td> <td>980/24</td> <td>688 (700-1/2)</td> <td colspan="3">980-1 1/2 688 (700-1 1/2)</td> </tr> <tr> <td><b>C</b> CIRCLING</td> <td>980-1</td> <td>639 (700-1)</td> <td>980-2</td> <td>1020-2 1/4</td> <td>1140-2 3/4</td> </tr> <tr> <td colspan="6">IPEPE FIX MINIMUMS (DUAL VOR RECEIVERS OR RADAR REQUIRED)</td> </tr> <tr> <td>S-LOC 27</td> <td>720/24</td> <td>428 (400-1/2)</td> <td colspan="3">720/40 428 (400-3/4)</td> </tr> <tr> <td><b>C</b> CIRCLING</td> <td>940-1</td> <td>599 (600-1)</td> <td>940-1 1/2</td> <td>1020-2 1/4</td> <td>1140-2 3/4</td> </tr> </tbody> </table>							CATEGORY	A	B	C	D	E	S-ILS 27 *	492/24 200 (200-1/2)					S-LOC 27	980/24	688 (700-1/2)	980-1 1/2 688 (700-1 1/2)			<b>C</b> CIRCLING	980-1	639 (700-1)	980-2	1020-2 1/4	1140-2 3/4	IPEPE FIX MINIMUMS (DUAL VOR RECEIVERS OR RADAR REQUIRED)						S-LOC 27	720/24	428 (400-1/2)	720/40 428 (400-3/4)			<b>C</b> CIRCLING	940-1	599 (600-1)	940-1 1/2	1020-2 1/4	1140-2 3/4
CATEGORY	A	B	C	D	E																																														
S-ILS 27 *	492/24 200 (200-1/2)																																																		
S-LOC 27	980/24	688 (700-1/2)	980-1 1/2 688 (700-1 1/2)																																																
<b>C</b> CIRCLING	980-1	639 (700-1)	980-2	1020-2 1/4	1140-2 3/4																																														
IPEPE FIX MINIMUMS (DUAL VOR RECEIVERS OR RADAR REQUIRED)																																																			
S-LOC 27	720/24	428 (400-1/2)	720/40 428 (400-3/4)																																																
<b>C</b> CIRCLING	940-1	599 (600-1)	940-1 1/2	1020-2 1/4	1140-2 3/4																																														
FAF to MAP 4.9 NM			<table border="1"> <tr> <td>Knots</td> <td>60</td> <td>90</td> <td>120</td> <td>150</td> <td>180</td> </tr> <tr> <td>Min:Sec</td> <td>4:54</td> <td>3:16</td> <td>2:27</td> <td>1:58</td> <td>1:38</td> </tr> </table>							Knots	60	90	120	150	180	Min:Sec	4:54	3:16	2:27	1:58	1:38																														
Knots	60	90	120	150	180																																														
Min:Sec	4:54	3:16	2:27	1:58	1:38																																														

SE-1, 15 MAY 2025 to 12 JUN 2025

SE-1, 15 MAY 2025 to 12 JUN 2025