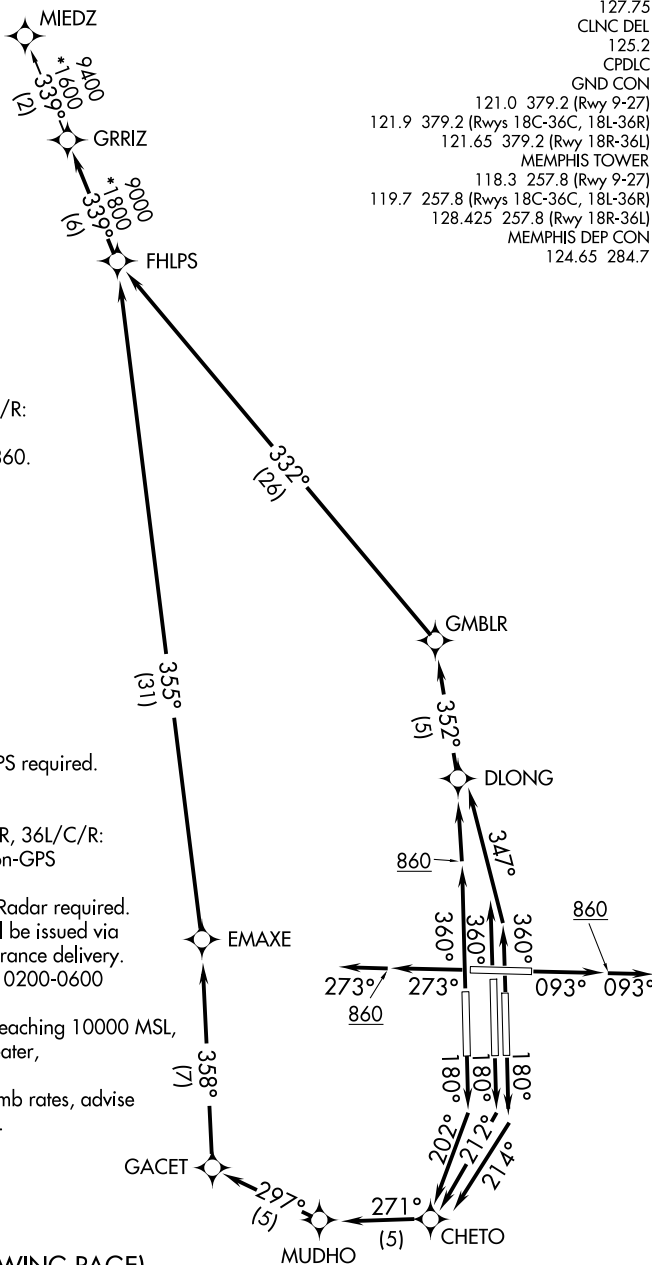


GRRIZ FIVE DEPARTURE (RNAV)

MEMPHIS, TENNESSEE

**TOP ALTITUDE:
5000**

D-ATIS 127.75
 CLNC DEL 125.2
 CPDLC
 GND CON 121.0 379.2 (Rwy 9-27)
 121.9 379.2 (Rwys 18C-36C, 18L-36R)
 121.65 379.2 (Rwy 18R-36L)
 MEMPHIS TOWER 118.3 257.8 (Rwy 9-27)
 119.7 257.8 (Rwys 18C-36C, 18L-36R)
 128.425 257.8 (Rwy 18R-36L)
 MEMPHIS DEP CON 124.65 284.7



TAKEOFF MINIMUMS:

Rwys 9, 18L/C/R, 27, 36L/C/R:
 Standard with minimum
 climb of 500' per NM to 860.

- NOTE: DME/DME/IRU or GPS required.
- NOTE: RNAV 1.
- NOTE: Turbojets only.
- NOTE: Takeoff Rwys 18L/C/R, 36L/C/R:
Radar required for non-GPS
equipped aircraft.
- NOTE: Takeoff Rwys 9, 27: Radar required.
- NOTE: Transponder code will be issued via
PDC or Memphis clearance delivery.
- NOTE: Procedure authorized 0200-0600
local only.
- NOTE: Accelerate to 250K, reaching 10000 MSL,
maintain 250K or greater,
if unable advise ATC.
- NOTE: If unable to accept climb rates, advise
ATC on initial contact.

(NARRATIVE ON FOLLOWING PAGE)

NOTE: Chart not to scale.

GRRIZ FIVE DEPARTURE (RNAV)

(GRRIZ5.GRRIZ) 31DEC20

MEMPHIS, TENNESSEE
MEMPHIS INTL (M.E.M)

SE-1, 15 MAY 2025 to 12 JUN 2025

SE-1, 15 MAY 2025 to 12 JUN 2025