

# CHLDR FIVE DEPARTURE (RNAV)

SE-1, 15 MAY 2025 to 12 JUN 2025

D-ATIS  
127.75

CINC DEL  
125.2

CPDLC

GND CON

121.0 379.2 (Rwy 9-27)

121.9 379.2 (Rwys 18C-36C,  
18L-36R)

121.65 379.2 (Rwy 18R-36L)

MEMPHIS TOWER  
118.3 257.8 (Rwy 9-27)

119.7 257.8 (Rwys 18C-36C,  
18L-36R)

128.425 257.8 (Rwy 18R-36L)

MEMPHIS DEP CON  
124.65 284.7

NOTE: DME/DME/IRU or GPS required.  
RNAV 1.

NOTE: Turbojets only.

NOTE: Takeoff Rwys 18L/C/R, 36L/C/R:

NOTE: RADAR required for non-GPS equipped  
aircraft.

NOTE: Takeoff Rwys 9, 27: RADAR required.

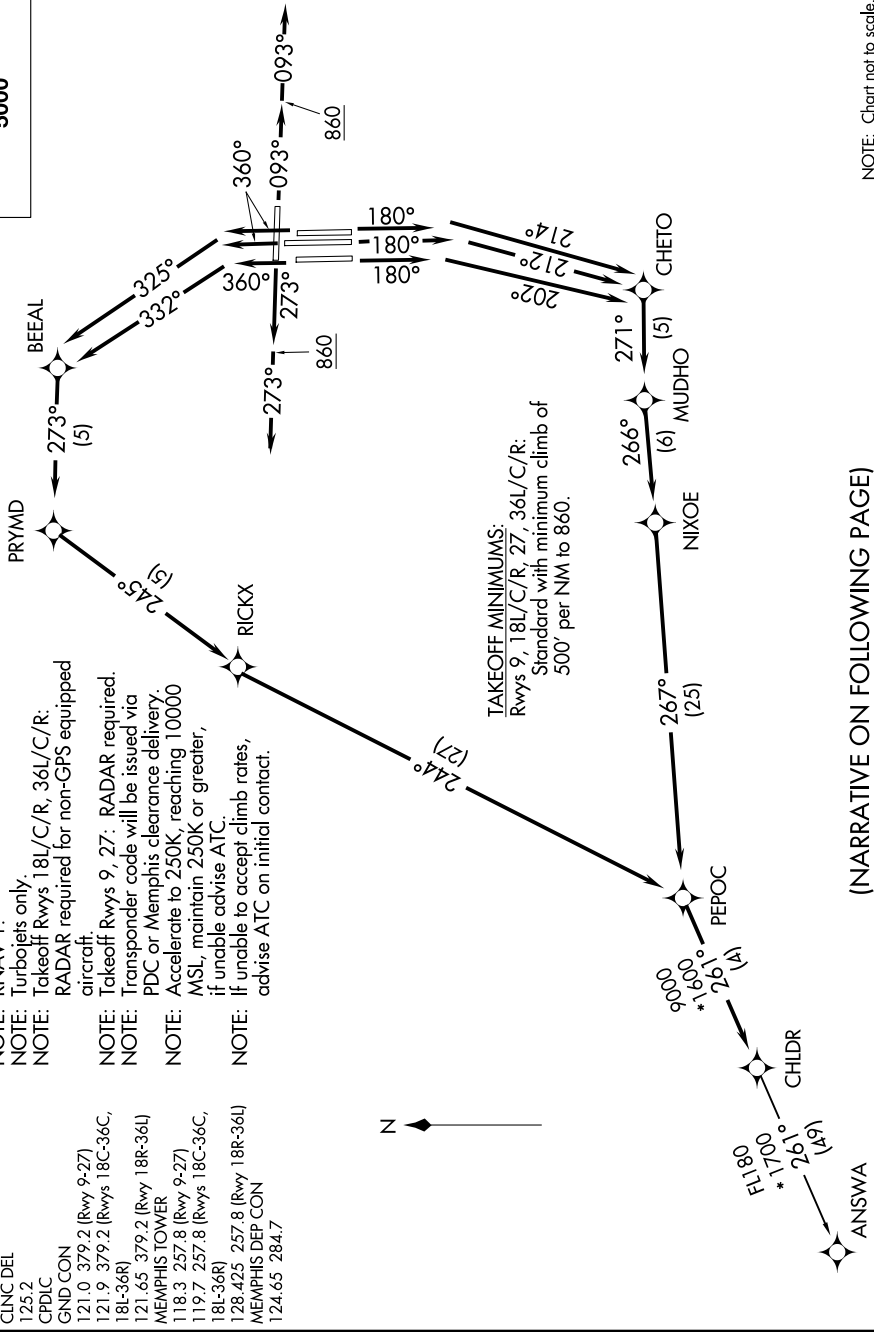
NOTE: Transponder code will be issued via  
PDC or Memphis clearance delivery.

NOTE: Accelerate to 250K, reaching 10000

NOTE: MSL, maintain 250K or greater,  
if unable advise ATC.

NOTE: If unable to accept climb rates,  
advise ATC on initial contact.

TOP ALTITUDE:  
5000



NOTE: Chart not to scale.

(NARRATIVE ON FOLLOWING PAGE)

SE-1, 15 MAY 2025 to 12 JUN 2025

# CHLDR FIVE DEPARTURE (RNAV)