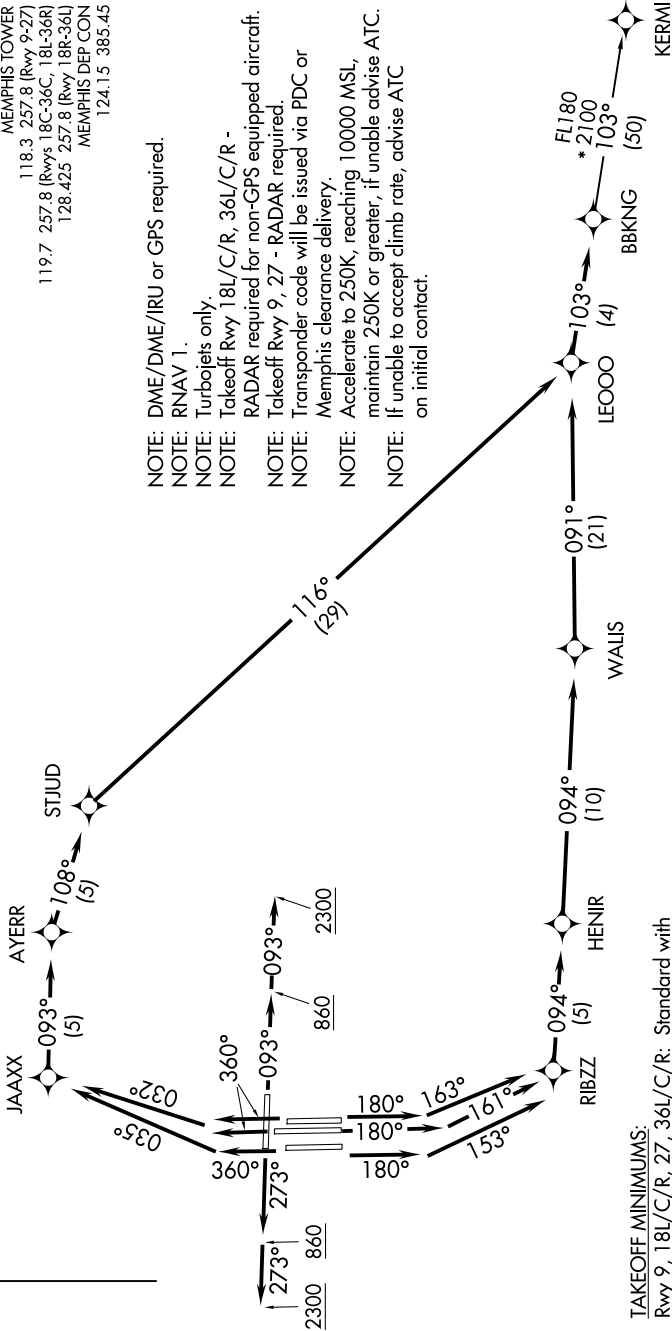
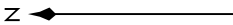


BBKNG SEVEN DEPARTURE (RNAV)

SE-1, 15 MAY 2025 to 12 JUN 2025

TOP ALTITUDE:
5000



- NOTE: DME/DME/IRU or GPS required.
- NOTE: RNAV 1.
- NOTE: Turbojets only.
- NOTE: Takeoff Rwy 18L/C/R, 36L/C/R - RADAR required for non-GPS equipped aircraft.
- NOTE: Takeoff Rwy 9, 27 - RADAR required.
- NOTE: Transponder code will be issued via PDC or Memphis clearance delivery.
- NOTE: Accelerate to 250K, reaching 10000 MSL, maintain 250K or greater, if unable advise ATC.
- NOTE: If unable to accept climb rate, advise ATC on initial contact.

TAKEOFF MINIMUMS:
Rwy 9, 18L/C/R, 27, 36L/C/R: Standard with minimum climb of 500' per NM to 860.

NOTE: Chart not to scale.

(NARRATIVE ON FOLLOWING PAGE)

SE-1, 15 MAY 2025 to 12 JUN 2025

BBKNG SEVEN DEPARTURE (RNAV)