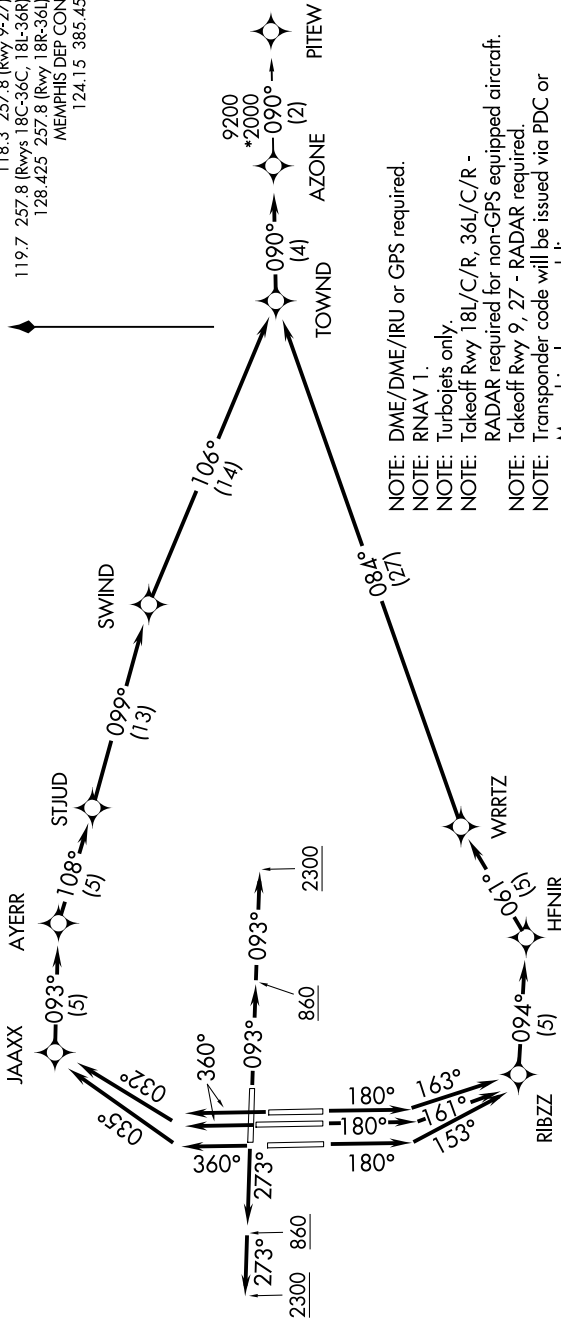


# AZONE SEVEN DEPARTURE (RNAV)

SE-1, 15 MAY 2025 to 12 JUN 2025

**TOP ALTITUDE:**  
5000

D-ATIS 127.75  
 CLINC DEL 125.2  
 CPDLC  
 GND CON  
 121.0 379.2 (Rwy 9-27)  
 121.9 379.2 (Rwys 18C-36C, 18L-36R)  
 121.65 379.2 (Rwy 18R-36L)  
 MEMPHIS TOWER  
 118.3 257.8 (Rwy 9-27)  
 119.7 257.8 (Rwys 18C-36C, 18L-36R)  
 128.425 257.8 (Rwy 18R-36L)  
 MEMPHIS DEP CON  
 124.15 385.45



- NOTE: DME/DME/IRU or GPS required.
- NOTE: RNAV 1.
- NOTE: Turbojets only.
- NOTE: Takeoff Rwy 18L/C/R, 36L/C/R -
- NOTE: RADAR required for non-GPS equipped aircraft.
- NOTE: Takeoff Rwy 9, 27 - RADAR required.
- NOTE: Transponder code will be issued via PDC or Memphis clearance delivery.
- NOTE: Accelerate to 250K, reaching 10000 MSL, maintain 250K or greater, if unable advise ATC.
- NOTE: Procedure not authorized when Columbus 4 MOA active.
- NOTE: If unable to accept climb rate, advise ATC on initial contact.

**TAKEOFF MINIMUMS:**  
 Rwy 9, 18L/C/R, 27, 36L/C/R: Standard with minimum climb of 500' per NM to 860.

NOTE: Chart not to scale.

(NARRATIVE ON FOLLOWING PAGE)

SE-1, 15 MAY 2025 to 12 JUN 2025

# AZONE SEVEN DEPARTURE (RNAV)