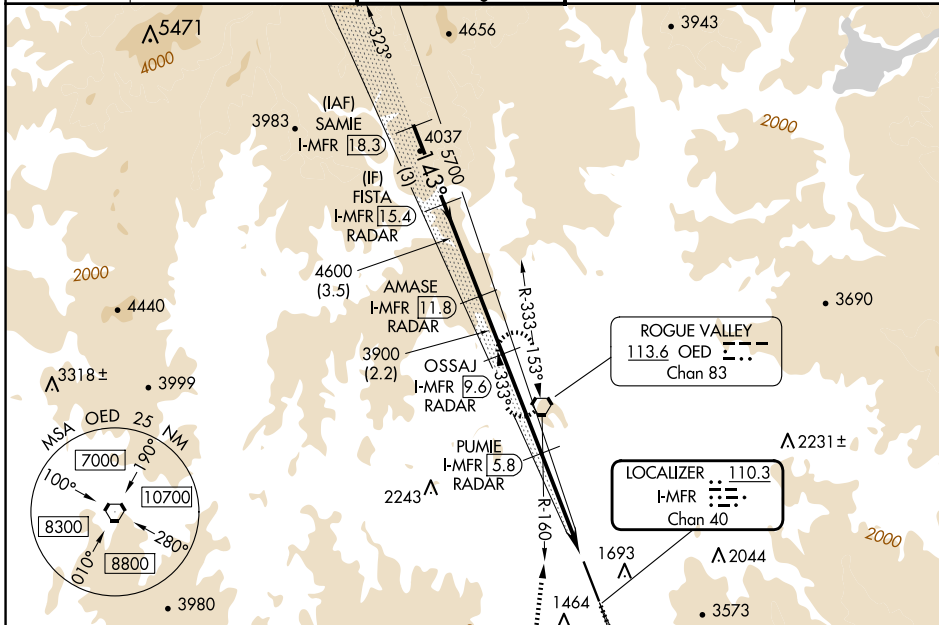


LOC/DME I-MFR <b>110.3</b> Chan <b>40</b>	APP CRS <b>143°</b>	Rwy Idg TDZE Apt Elev	<b>8800</b> <b>1303</b> <b>1335</b>
---	------------------------	-----------------------------	---

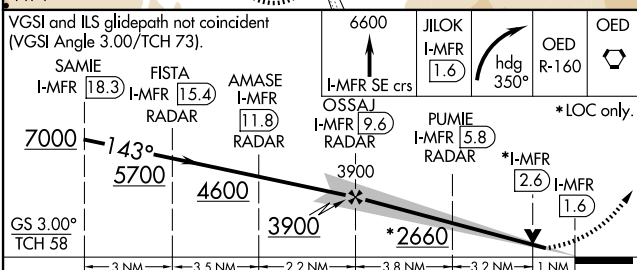
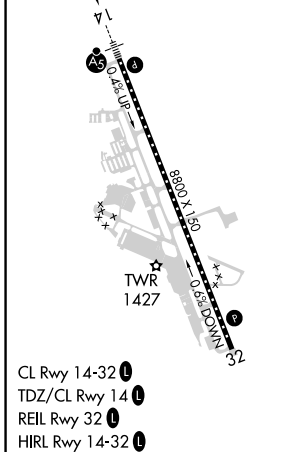
# ILS or LOC RWY 14

ROGUE VALLEY INTL/MEDFORD (MFR)

DME required. DME or RADAR required for procedure entry.		MALS R	MISSED APPROACH: Climb to 6600 on I-MFR SE course to JILOK/I-MFR 1.6 DME and climbing right turn on heading 350° and on OED VORTAC R-160 to OED VORTAC and hold, continue climb-in-hold to 6600. #Missed approach requires minimum climb of 331 feet per NM to 4100.	
<p>⚠ Circling NA for Cats C and D northeast of Rwy 14-32. When Medford altimeter setting not received, procedure NA. For inop ALS, increase S-ILS 14 visibility to 1½ SM, increase S-LOC 14# Cats C and D visibility to RVR 5500, increase S-LOC 14 Cats C and D visibility to 2½ SM.</p>				
ATIS <b>127.25</b>	CASCADE APP CON* <b>124.3 379.9</b>	MEDFORD TOWER* <b>119.4 (CTAF) 0257.8</b>	GND CON <b>121.8</b>	UNICOM <b>122.95</b>



ELEV 1335	<b>D</b>	TDZE 1303
-----------	----------	-----------



CATEGORY	A	B	C	D
S-ILS 14#		1503/18	200 (200-½)	
S-ILS 14		1929-1¾	626 (600-1¾)	
S-LOC 14#	1680/24	377 (400-½)	1680/35	377 (400-¾)
S-LOC 14	2080/24 777 (800-½)	2080/40 777 (800-¾)	2080-1¾	777 (800-1¾)
<b>C</b> CIRCLING	2080-1 745 (800-1)	2080-1¼ 745 (800-1¼)	2080-2½ 745 (800-2½)	2340-3 1005 (1100-3)

NW-1, 15 MAY 2025 to 12 JUN 2025

NW-1, 15 MAY 2025 to 12 JUN 2025