

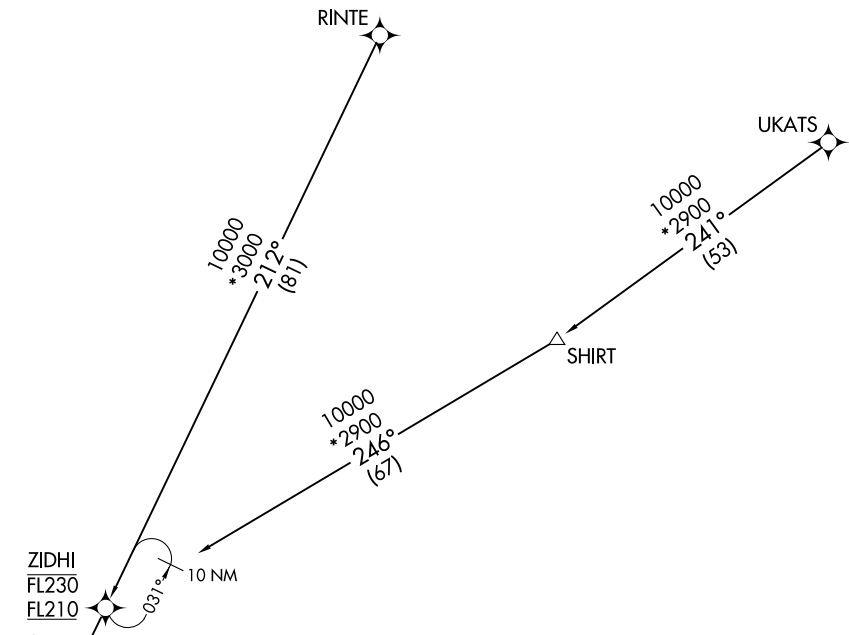
DLAMP EIGHT ARRIVAL (RNAV) Transition Routes

LOUISVILLE APP CON
132.075 327.0
D-ATIS
118.725

RNAV 1 - DME/DME/IRU or GPS.
RADAR required.

SE-1, 15 MAY 2025 to 12 JUN 2025

SE-1, 15 MAY 2025 to 12 JUN 2025



- NOTE: Jet aircraft only.
- NOTE: KSDf Landing North select Rwy 35R Transition. Expect runway assignment from Louisville APP CON prior to ANCHR.
- NOTE: KSDf Landing South select Rwy 17L Transition. Expect runway assignment from Louisville APP CON prior to ANCHR.

ANCHR
FL200 280K
17000

See following page for Arrival Routes.

RINTE TRANSITION (RINTE.DLAMP8):
UKATS TRANSITION (UKATS.DLAMP8):

NOTE: Chart not to scale.

(CONTINUED ON FOLLOWING PAGE)