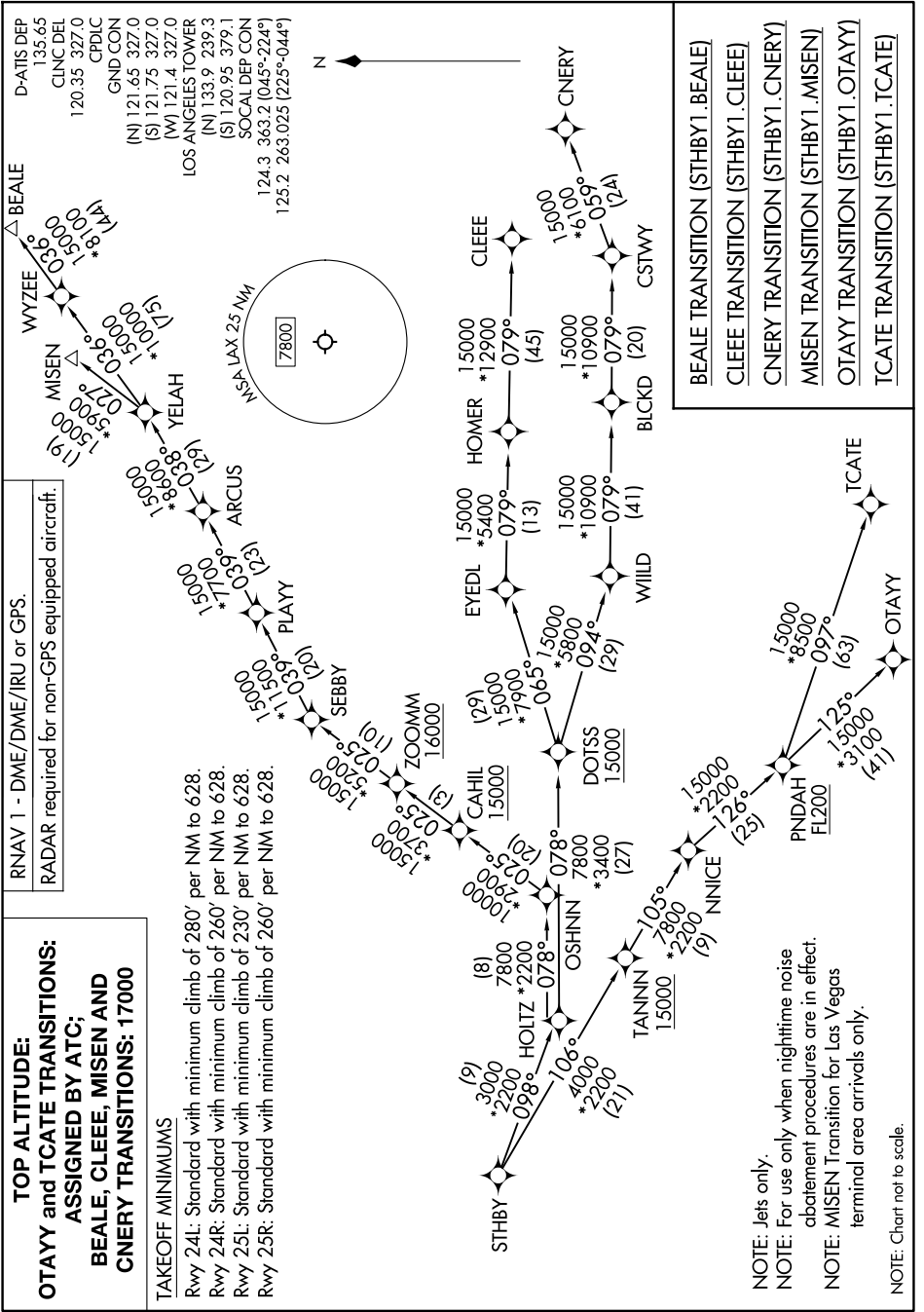


# STHBY ONE DEPARTURE (RNAV) (Transition Routes)

SW-3, 15 MAY 2025 to 12 JUN 2025



**TOP ALTITUDE:  
OTAY and TCATE TRANSITIONS:  
ASSIGNED BY ATC;  
BEALE, CLEEE, MISEN AND  
CNERY TRANSITIONS: 17000**

**TAKEOFF MINIMUMS**

Rwy 24L: Standard with minimum climb of 280' per NM to 628.  
 Rwy 24R: Standard with minimum climb of 260' per NM to 628.  
 Rwy 25L: Standard with minimum climb of 230' per NM to 628.  
 Rwy 25R: Standard with minimum climb of 260' per NM to 628.

BEALE TRANSITION (STHBY1 .BEALE)  
CLEEE TRANSITION (STHBY1 .CLEEE)  
CNERY TRANSITION (STHBY1 .CNERY)  
MISEN TRANSITION (STHBY1 .MISEN)  
OTAY TRANSITION (STHBY1 .OTAY)  
TCATE TRANSITION (STHBY1 .TCATE)

NOTE: Jets only.  
 NOTE: For use only when nighttime noise abatement procedures are in effect.  
 NOTE: MISEN Transition for Las Vegas terminal area arrivals only.  
 NOTE: Chart not to scale.

SW-3, 15 MAY 2025 to 12 JUN 2025

# STHBY ONE DEPARTURE (RNAV) (Transition Routes)