

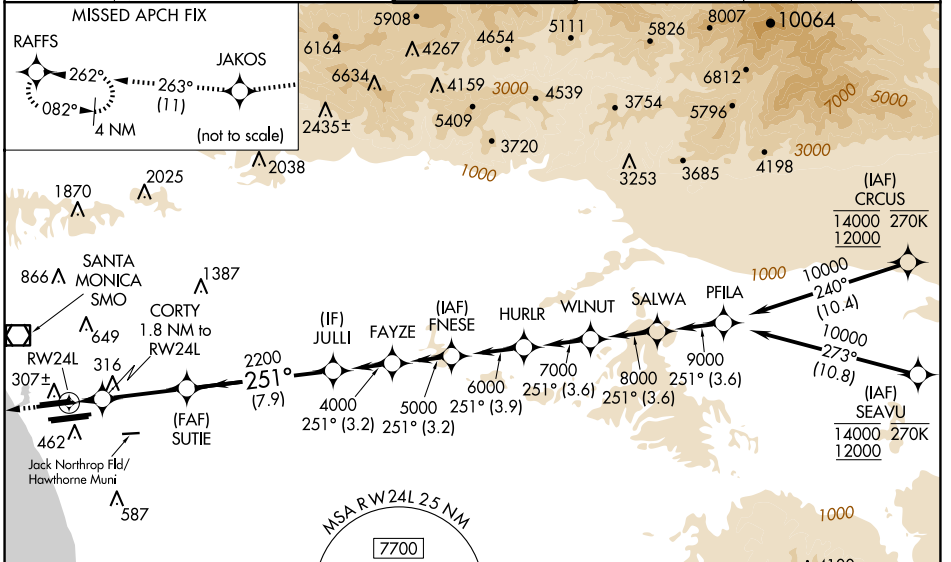
WAAS CH 56407 W24B	APP CRS 251°	Rwy Idg TDZE Apt Elev	9483 123 128
--	------------------------	-----------------------------	---

RNAV (GPS) Y RWY 24L

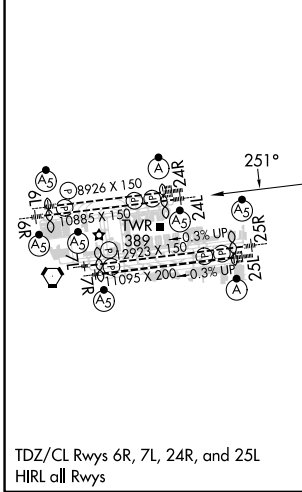
LOS ANGELES INTL (LAX)

RNP APCH.	<p>Simultaneous approach authorized. LNAV procedure NA during simultaneous operations. Use of FD or AP providing RNAV track guidance required during simultaneous operations. Simultaneous approach authorized with HHR. For uncompensated Baro-VNAV systems, LNAV/VNAV NA below 5°C or above 54°C. For inop ALS, increase LNAV/VNAV all Cats visibility to 1½ SM. #RVR 1800 authorized with use of FD or AP or HUD to DA.</p>	MALSR	<p>MISSED APPROACH: Climb to 2000 direct JAKOS and on track 263° to RAFFS and hold.</p>
-----------	--	-------	---

D-ATIS ARR 133.8 DEP 135.65	SOCAL APP CON 124.3 363.2 (APCH FM WEST) 124.5 235.975 (223°-044°)	124.9 269.0 (090°-224°) 128.5 360.7 (045°-089°)	LOS ANGELES TOWER N 133.9 239.3 S 120.95 379.1	GND CON N 121.65 327.0 S 121.75 327.0 W 121.4 327.0	CLNC DEL 120.35 327.0	CPDLC
---	--	--	--	---	---	-------



ELEV 128	D	TDZE 123
----------	----------	----------



2000	JAKOS	tr 263°	RAFFS	VGSI and RNAV glidepath not coincident (VGSI Angle 3.00/TCH 79).
*LNAV only				JULLI 4000
CORTY 1.8 NM to RWY 24L		SUTIE 2200	GP 3.00° TCH 59	
RWY 24L 740*		2200		
1.8 NM		4.6 NM		7.9 NM

CATEGORY	A	B	C	D
LPV DA#	323/24 200 (200-½)			
LNAV/VNAV DA	608/50 485 (500-1)			
LNAV MDA	660/24 537 (600-½)		660/55 537 (600-1)	

SW-3, 15 MAY 2025 to 12 JUN 2025

SW-3, 15 MAY 2025 to 12 JUN 2025