

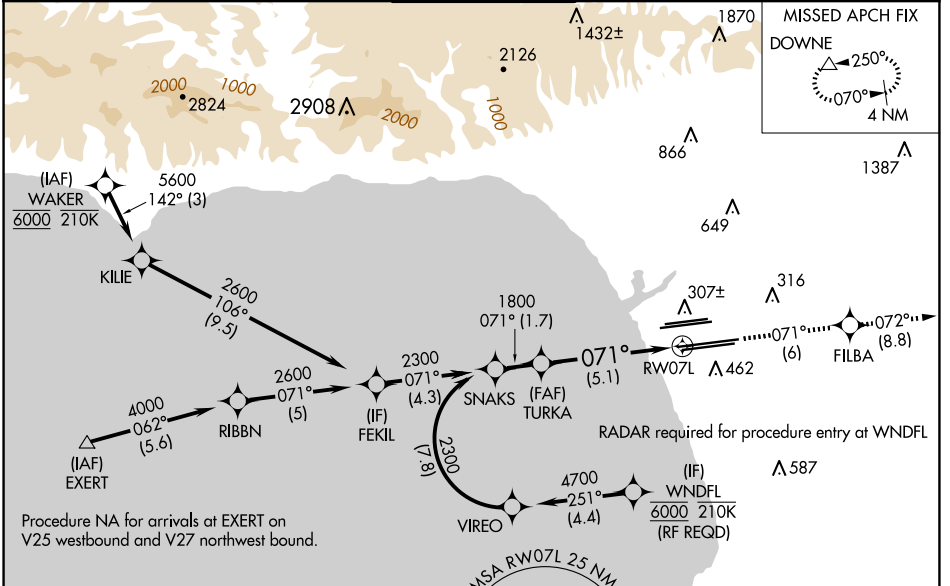
APP CRS	Rwy Idg	11259
071°	TDZE	128
	Apt Elev	128

RNAV (RNP) Z RWY 7L

LOS ANGELES INTL (LAX)

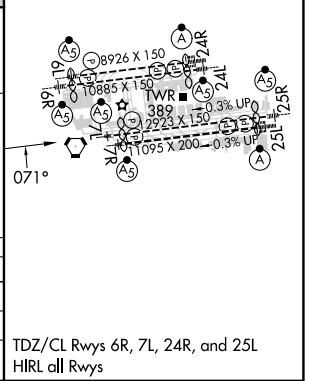
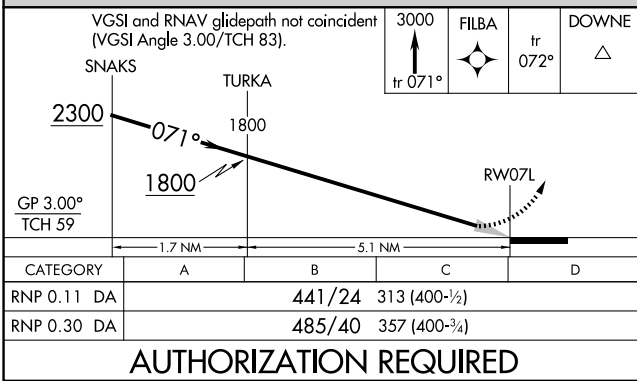
<p>▽ For uncompensated Baro-VNAV systems, procedure NA below 5°C (41°F) or above 54°C (130°F). GPS required. Simultaneous approach authorized. For inop ALS, increase RNP 0.11 all Cats visibility to RVR 5000 and RNP 0.30 all Cats visibility to RVR 6000.</p>		<p>MISSED APPROACH: Climb to 3000 on track 071° to FILBA and on track 072° to DOWNE and hold.</p>

D-ATIS	SOCAL APP CON	LOS ANGELES TOWER	GND CON	CLNC DEL	CPDLC
ARR 133.8	124.3 363.2 (APCH FM WEST)	124.9 269.0 (090°-224°)	N 133.9 239.3 S 120.95 379.1	N 121.65 327.0 S 121.75 327.0 W 121.4 327.0	120.35 327.0
DEP 135.65	124.5 235.975 (225°-044°)	128.5 360.7 (045°-089°)			



Procedure NA for arrivals at EXERT on V25 westbound and V27 northwest bound.

ELEV 128	D TDZE 128
----------	-------------------



AUTHORIZATION REQUIRED

TDZ/CL Rwy 6R, 7L, 24R, and 25L
HIRL all Rwy

SW-3, 15 MAY 2025 to 12 JUN 2025

SW-3, 15 MAY 2025 to 12 JUN 2025