

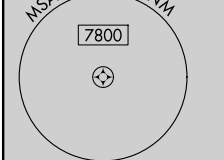
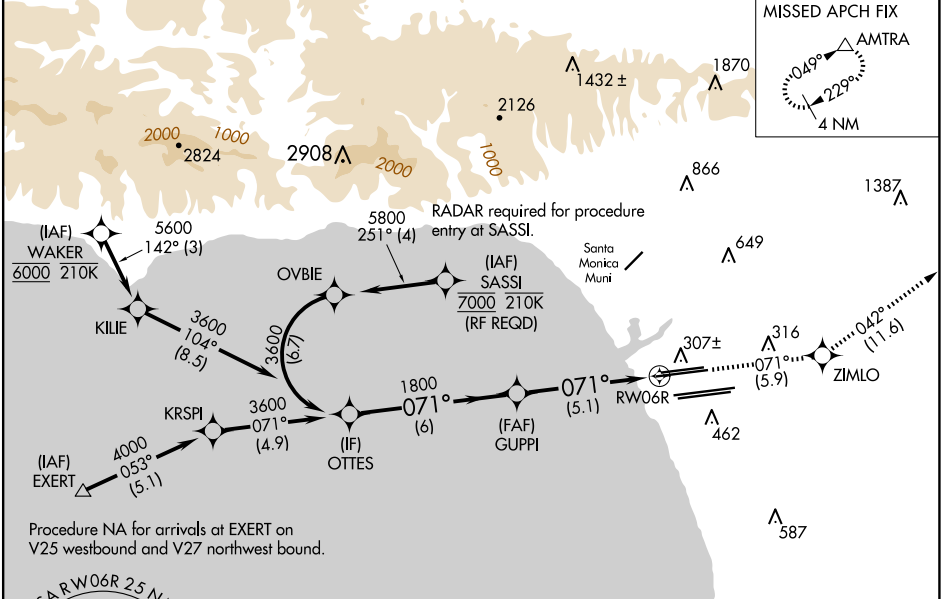
APP CRS <b>071°</b>	Rwy Idg TDZE Apt Elev	<b>9748</b> <b>116</b> <b>128</b>
------------------------	-----------------------------	---

# RNAV (RNP) Z RWY 6R

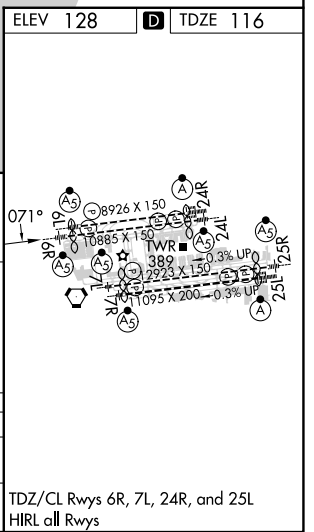
LOS ANGELES INTL (LAX)

<p>▼ For uncompensated Baro-VNAV systems, procedure NA below 5°C (41°F) or above 54°C (130°F). GPS required. Simultaneous approach authorized. For inop ALS, increase RNP 0.30 all Cats visibility to RVR 6000.</p>	<p>MALSR</p>	<p>MISSED APPROACH: Climb to 3000 on track 071° to ZIMLO and on track 042° to AMTRA and hold.</p>

D-ATIS ARR <b>133.8</b> DEP <b>135.65</b>	<p>SOCL APP CON</p> <p><b>124.3 363.2</b> (APCH FM WEST)</p> <p><b>124.9 269.0</b> (090°-224°)</p> <p><b>124.5 235.975</b> (225°-044°)</p> <p><b>128.5 360.7</b> (045°-089°)</p>	<p>LOS ANGELES TOWER</p> <p><b>N 133.9 239.3</b> <b>S 120.95 379.1</b></p>	<p>GND CON</p> <p><b>N 121.65 327.0</b> <b>S 121.75 327.0</b> <b>W 121.4 327.0</b></p>	<p>CLNC DEL</p> <p><b>120.35</b> <b>327.0</b></p>	<p>CPDLC</p>
---	--	--	--	---	--------------



<p>VGSI and RNAV glidepath not coincident (VGSI Angle 3.00°/TCH 69°)</p>				<p>3000</p> <p>↑</p> <p>tr 071°</p>	<p>ZIMLO</p> <p>✧</p> <p>tr 042°</p>	<p>AMTRA</p> <p>△</p>
<p>OTTES</p> <p>3600</p>	<p>071°</p>		<p>GUPPI</p> <p>1800</p>	<p>RW06R</p>		
<p>GP 3.00°</p> <p>TCH 53</p>	<p>6 NM</p>		<p>5.1 NM</p>			
CATEGORY	A	B	C	D		
RNP 0.30 DA	471/40 355 (400-¾)					
<b>AUTHORIZATION REQUIRED</b>						



SW-3, 15 MAY 2025 to 12 JUN 2025

SW-3, 15 MAY 2025 to 12 JUN 2025