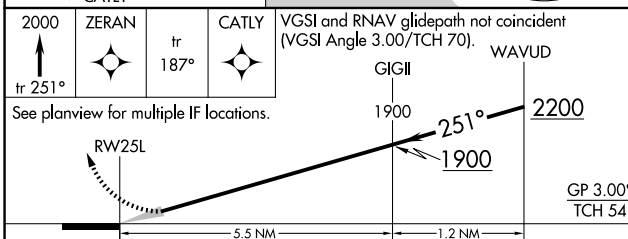
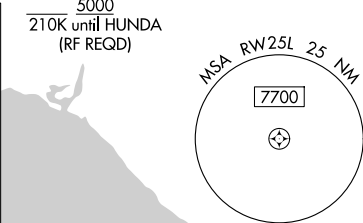
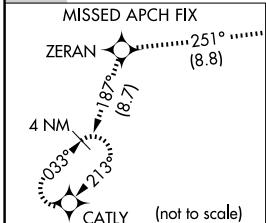
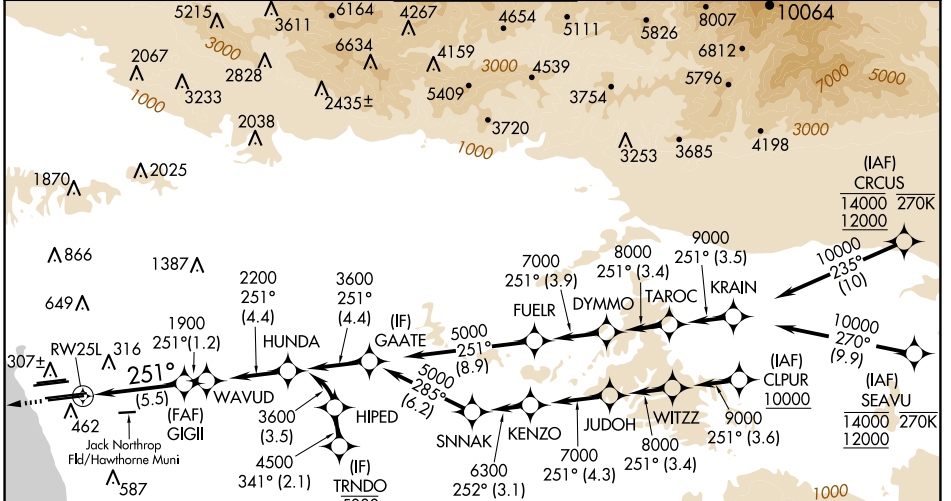


APP CRS	Rwy Idg	11095
251°	TDZE	104
	Apf Elev	128

RNAV (RNP) Z RWY 25L

LOS ANGELES INTL (LAX)

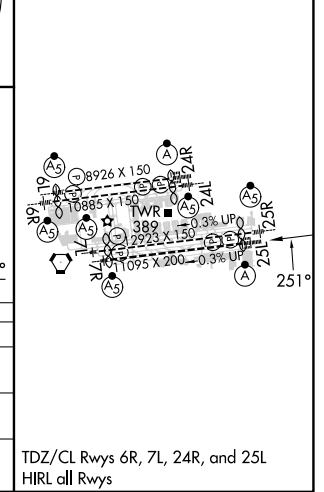
RNP AR APCH.				ALSF-2	MISSED APPROACH: Climb to 2000 on track 251° to ZERAN and on track 187° to CATLY and hold.		
<p>GPS required. For uncompensated Baro-VNAV systems, procedure NA below 5°C or above 54°C. Simultaneous approach authorized.</p> <p>Simultaneous approach authorized with HHR.</p>							
D-ATIS	SOCAL APP CON			LOS ANGELES TOWER	GND CON	CLNC DEL	CPDLC
ARR 133.8	124.3	363.2	124.9	269.0	N 121.65	327.0	
DEP 135.65	(APCH FM WEST)			N 133.9	S 121.75	327.0	
	124.5	235.975	128.5	360.7	W 121.4	327.0	
	(225°-044°)			(090°-224°)			
				(045°-089°)			



ELEV 128	D TDZE 104
----------	-------------------

CATEGORY	A	B	C	D
RNP 0.15 DA		445/30	341 (400-5%)	
RNP 0.30 DA		543/50	439 (500-1)	

AUTHORIZATION REQUIRED



SW-3, 15 MAY 2025 to 12 JUN 2025

SW-3, 15 MAY 2025 to 12 JUN 2025