

LAXX ONE DEPARTURE

AL-237 (FAA)

LOS ANGELES INTL (LAX)
LOS ANGELES, CALIFORNIA

SW-3, 15 MAY 2025 to 12 JUN 2025

TOP ALTITUDE: ASSIGNED BY ATC

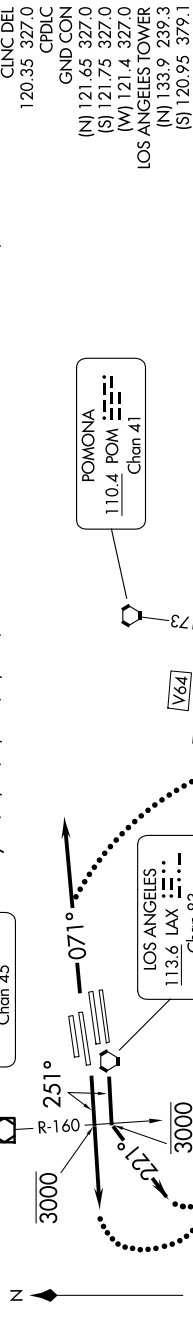
SOCAL DEP CON
124.3 363.2 (045°-224°)
125.2 263.025 (225°-044°)
D-ATIS DEP
135.65
CINCL DEL
120.35 327.0
CPDLC
GND CON
(N) 121.65 327.0
(S) 121.75 327.0
(W) 121.4 327.0
LOS ANGELES TOWER
(N) 133.9 239.3
(S) 120.95 379.1

NOTE: This departure is for
turboprop aircraft only.

NOTE: RADAR and DME required.

TAKEOFF MINIMUMS

Rwy 6L/R, 7L/R, 24L/R, 25L/R: Standard.



FICKY

Expect clearance to FICKY
then on assigned route.

(CONTINUED ON FOLLOWING PAGE)

NOTE: Chart not to scale.

SW-3, 15 MAY 2025 to 12 JUN 2025

LAXX ONE DEPARTURE

LOS ANGELES, CALIFORNIA
LOS ANGELES INTL (LAX)