

# DARRK THREE DEPARTURE (RNAV)

AL-237 (FAA)

LOS ANGELES INTL (LAX)  
LOS ANGELES, CALIFORNIA

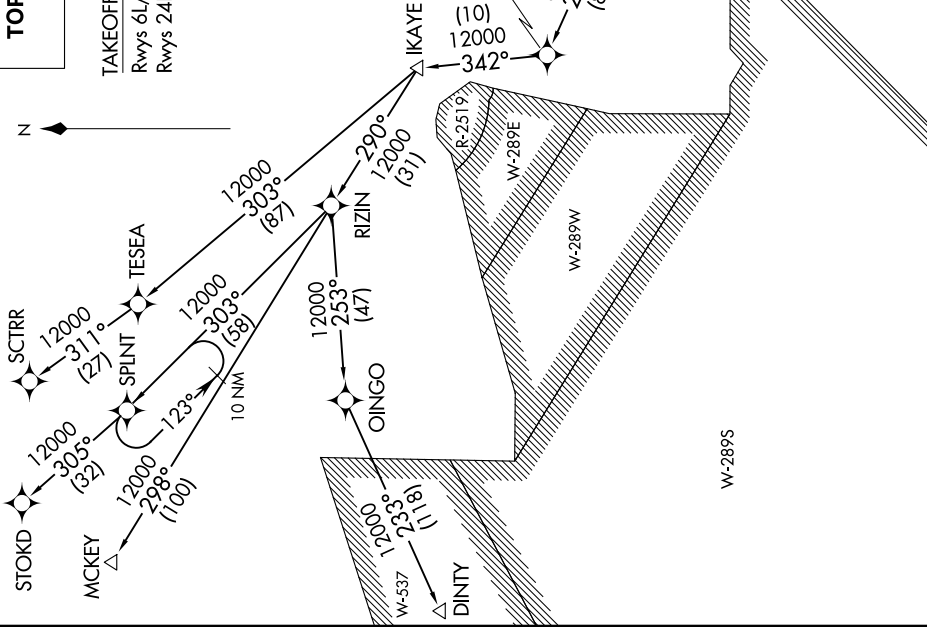
SW-3, 15 MAY 2025 to 12 JUN 2025

**TOP ALTITUDE:**  
**FL230**

**TAKEOFF MINIMUMS**  
Rwys 6L/R, 7L/R: NA - ATC.  
Rwys 24L/R, 25L/R: Standard with minimum climb  
of 500' per NM to 640'.

D-ATIS DEP 135.65  
CLNC DEL 120.35 327.0  
CPDLC  
GND CON (N) 121.65 327.0  
(S) 121.75 327.0  
(W) 121.4 327.0  
LOS ANGELES TOWER (N) 133.9 239.3  
(S) 120.95 379.1  
SOCAL DEP CON (S) 124.3 363.2 (045°-224°)  
125.2 263.025 (225°-044°)

NOTE: RNAV 1.  
NOTE: RADAR required.  
NOTE: STOKD, SCTRR and MCKEY transitions:  
DME/DME/IRU or GPS required.  
NOTE: DINTY transitions: GPS only.  
NOTE: Turbojet aircraft only.  
NOTE: File the RIZIN TRANSITION in lieu of the LADYJ DEPARTURE during  
time periods 2100-0700 LCL. All other times RIZIN TRANSITION ATC  
assigned only.



(NARRATIVE ON FOLLOWING PAGE)

NOTE: Chart not to scale.

SW-3, 15 MAY 2025 to 12 JUN 2025

# DARRK THREE DEPARTURE (RNAV)

LOS ANGELES, CALIFORNIA  
LOS ANGELES INTL (LAX)