

(CHATY5.CHATY) 23334
CHATY FIVE DEPARTURE

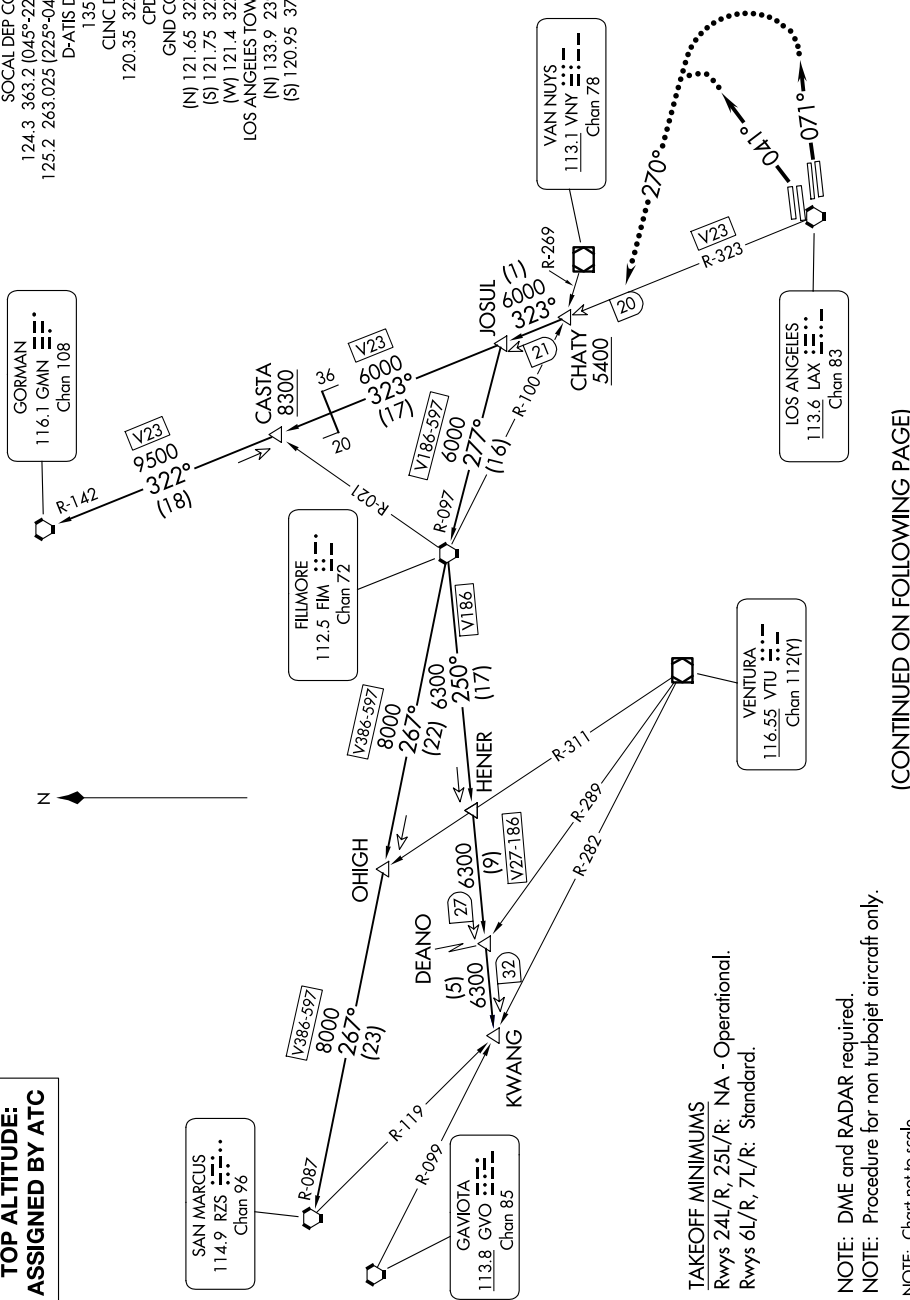
AL-237 (FAA)

LOS ANGELES INTL (LAX)
 LOS ANGELES, CALIFORNIA

SW-3, 15 MAY 2025 to 12 JUN 2025

**TOP ALTITUDE:
 ASSIGNED BY ATC**

SOCAL DEP CON
 124.3 363.2 (045°-224°)
 125.2 263.025 (225°-044°)
 D-ATIS DEP
 135.65
 120.35 327.0
 CINC DEL
 120.95 327.0
 CPDLC
 GND CON
 (N) 121.65 327.0
 (S) 121.75 327.0
 (W) 121.4 327.0
 LOS ANGELES TOWER
 (N) 133.9 239.3
 (S) 120.95 379.1



TAKEOFF MINIMUMS

Rwys 24L/R, 25L/R: NA - Operational.
 Rwys 6L/R, 7L/R: Standard.

NOTE: DME and RADAR required.
 NOTE: Procedure for non turbojet aircraft only.
 NOTE: Chart not to scale.

(CONTINUED ON FOLLOWING PAGE)

SW-3, 15 MAY 2025 to 12 JUN 2025

(CHATY5.CHATY) 27APR17
CHATY FIVE DEPARTURE

LOS ANGELES, CALIFORNIA
 LOS ANGELES INTL (LAX)