

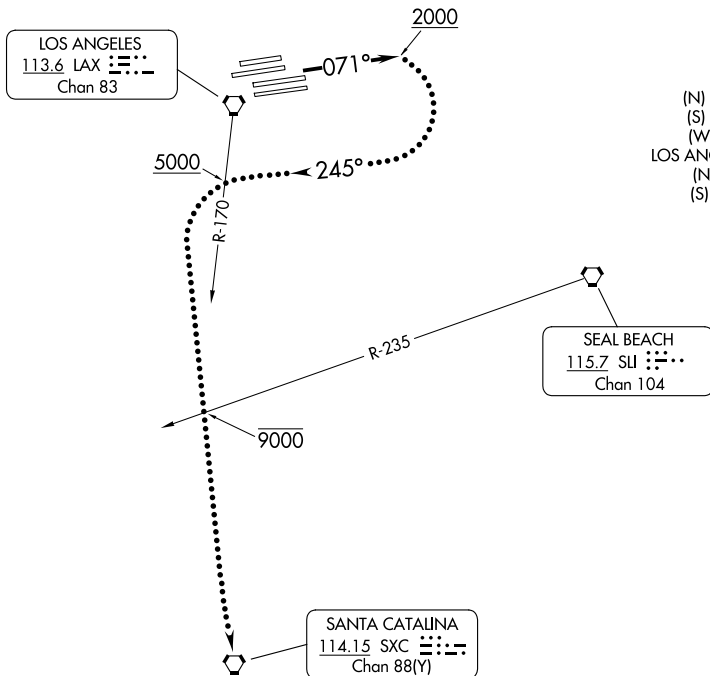
CATALINA EIGHT DEPARTURE

AL-237 (FAA)

LOS ANGELES INTL (LAX)
LOS ANGELES, CALIFORNIA

**TOP ALTITUDE:
ASSIGNED BY ATC**

SOCAL DEP CON
 124.3 363.2 (045°-224°)
 125.2 263.025 (225°-044°)
 D-ATIS DEP
 135.65
 CLNC DEL
 120.35 327.0
 CPDLC
 GND CON
 (N) 121.65 327.0
 (S) 121.75 327.0
 (W) 121.4 327.0
 LOS ANGELES TOWER
 (N) 133.9 239.3
 (S) 120.95 379.1



TAKEOFF MINIMUMS

Rwys 24L/R, 25L/R: NA-Operational.
 Rwys 6L/R, 7L/R: Standard.

NOTE: RADAR required.

NOTE: This is a RADAR vector departure to
 SXC VORTAC. Route depicted is a lost
 communication procedure only.

NOTE: Chart not to scale.



DEPARTURE ROUTE DESCRIPTION

TAKEOFF RUNWAYS 6L/R, 7L/R: Climb heading 071° for vectors to SXC VORTAC. Then on (assigned route). All aircraft expect further clearance to filed altitude 5 minutes after departure.

LOST COMMUNICATIONS:

TAKEOFF RUNWAYS 6L/R, 7L/R: If not in contact with Departure Control after reaching 2000', turn right heading 245°. Cross LAX R-170 at or above 5000', then turn left and proceed direct SXC VORTAC. Cross SLI R-235 at or below 9000'.

CATALINA EIGHT DEPARTURE