

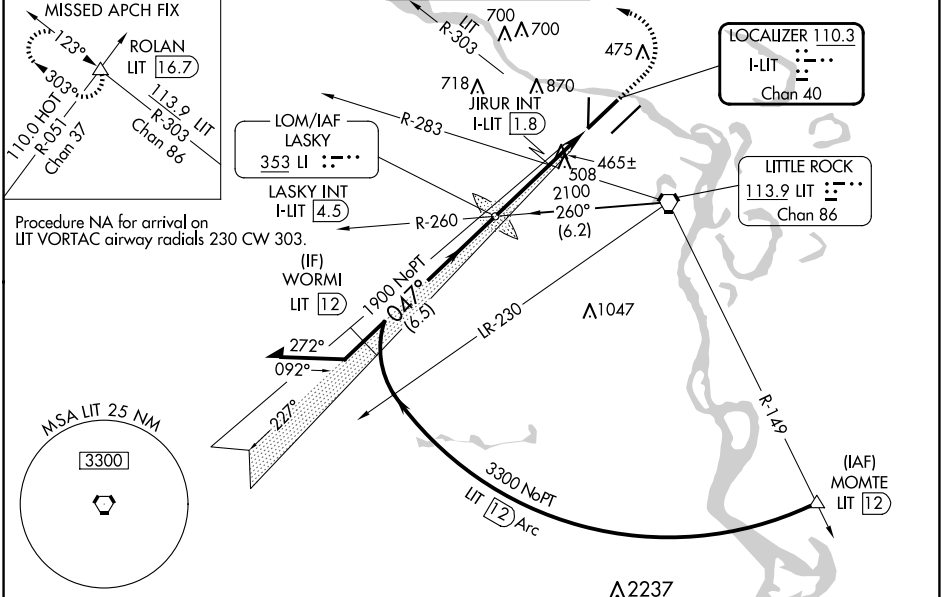
LOC/DME I-LIT 110.3 Chan 40	APP CRS 047°	Rwy Idg 7976 TDZE 258 Apt Elev 266
---	------------------------	---

ILS or LOC RWY 4L

BILL AND HILLARY CLINTON NTL/ADAMS FLD (LIT)

<p>⚠ Simultaneous approach authorized. Rwy 4L helicopter visibility reduction below RVR 4000 NA. Inop table does not apply to S-ILS 4L all Cats. LOC minimums: For inop ALS, increase S-LOC 4L Cats A/B visibility to 1 SM and Cats C/D visibility to 2 SM. JIRUR fix minimums: For inop ALS, increase S-LOC 4L Cats A/B visibility to 1 SM and Cats C/D visibility to 1 3/4 SM.</p>	<p>MALSR AS</p>	<p>MISSED APPROACH: Climb to 1500 then climbing left turn to 3500 on heading 260° and on LT VORTAC R-303 to ROLAN INT/LIT 16.7 DME and hold.</p>
---	---------------------	--

D-ATIS 125.65	LITTLE ROCK APP CON 135.4 353.6	ADAMS TOWER 118.7 257.8	GND CON 121.9 339.8	CLNC DEL 118.95
-------------------------	---	-----------------------------------	-------------------------------	---------------------------

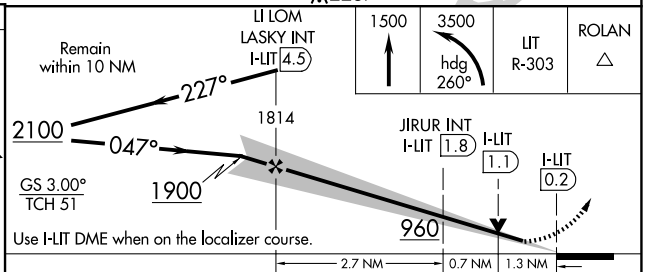


ELEV 266	D	TDZE 258
----------	----------	----------

MIRL Rwy 18-36
HIRL Rwys 4R-22L and 4L-22R
TDZ/CL Rwy 22R

FAF to MAP 4.7 NM

Knots	60	90	120	150	180
Min:Sec	4:42	3:08	2:21	1:53	1:34



CATEGORY	A	B	C	D
S-ILS 4L	508/40 250 (300-3/4)			
S-LOC 4L	960/40	702 (700-3/4)	960-1 5/8	702 (700-1 5/8)
C CIRCLING	960-1 694 (700-1)	1000-1 734 (800-1)	1180-2 3/4 914 (1000-2 3/4)	1180-3 914 (1000-3)
JIRUR FIX MINIMUMS (DUAL VOR RECEIVERS OR DME REQUIRED)				
S-LOC 4L	720/40	462 (500-3/4)	720/50	462 (500-1)
C CIRCLING	820-1 554 (600-1)	1000-1 734 (800-1)	1180-2 3/4 914 (1000-2 3/4)	1180-3 914 (1000-3)

SC-1, 15 MAY 2025 to 12 JUN 2025

SC-1, 15 MAY 2025 to 12 JUN 2025