

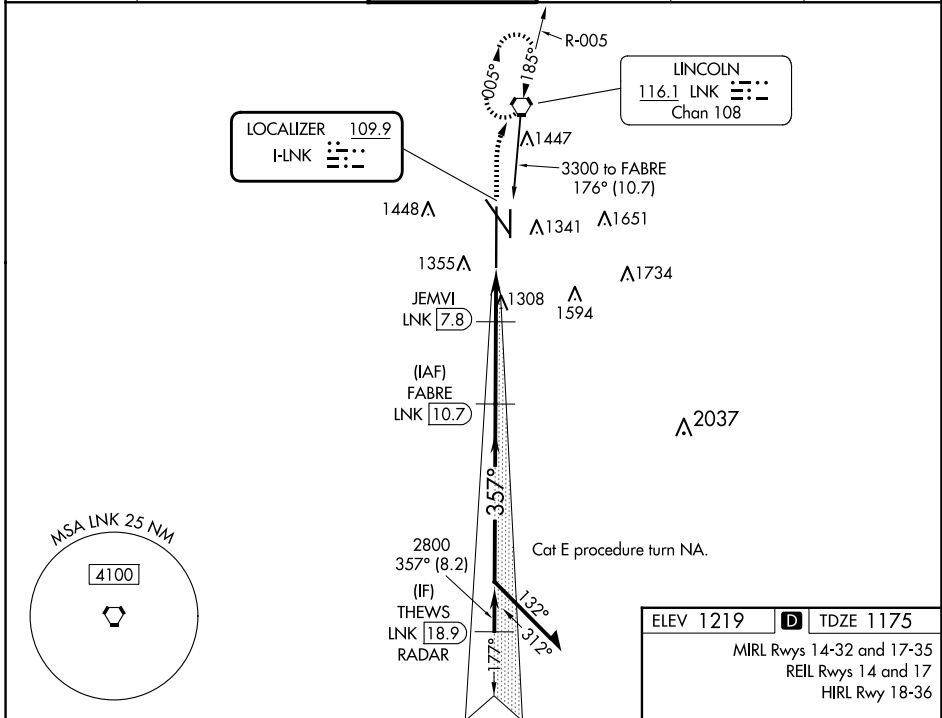
LOC I-LNK <b>109.9</b>	APP CRS <b>357°</b>	Rwy Idg <b>12901</b> TDZE <b>1175</b> Apt Elev <b>1219</b>
---------------------------	------------------------	--

# ILS Y or LOC Y RWY 36

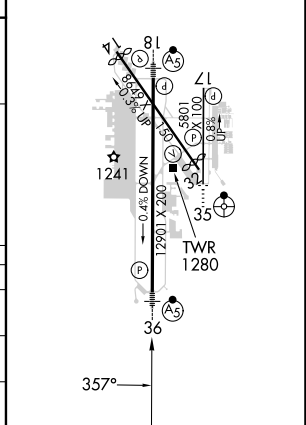
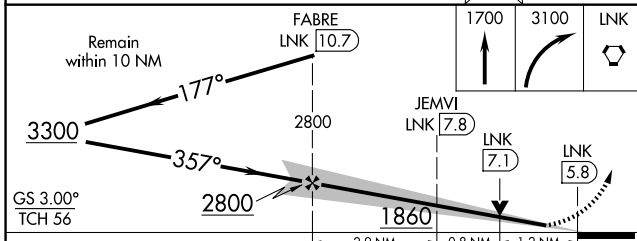
LINCOLN (LNK)

DME required. RADAR required for procedure entry at THEWS.		MALSR 	MISSED APPROACH: Climb to 1700 then climbing right turn to 3100 direct LNK VORTAC and hold, continue climb-in-hold to 3100.
<p><b>▽</b> For inop ALS, increase S-ILS 36 Cat E visibility to RVR 4000,  <b>▲</b> S-LOC 36 Cat E visibility to 1 3/8 SM. DME from LNK VORTAC.                  DME use requires simultaneous reception of I-LNK and LNK DME.                  *RVR 1800 authorized with use of FD or AP or HUD to DA.</p>			

ATIS <b>118.05 290.9</b>	OMAHA APP CON <b>124.0 270.3</b>	LINCOLN TOWER * <b>118.5 (CTAF) 253.5</b>	GND CON <b>121.9 275.8</b>	CLNC DEL <b>120.7 225.4</b>	UNICOM <b>122.95</b>
-----------------------------	-------------------------------------	--	-------------------------------	--------------------------------	-------------------------



ELEV 1219	<b>D</b> TDZE 1175
MIRL Rwy 14-32 and 17-35 REIL Rwy 14 and 17 HIRL Rwy 18-36	



CATEGORY	A	B	C	D	E
S-ILS 36*	1375/24 200 (200-1/2)				
S-LOC 36	1620/24	445 (500-1/2)	1620/45		445 (500-7/8)
CIRCLING	1680-1 461 (500-1)	1760-1 541 (600-1)	1820-1 3/4 601 (700-1 3/4)	1960-2 1/2 741 (800-2 1/2)	2040-3 821 (900-3)

NC-2, 15 MAY 2025 to 12 JUN 2025

NC-2, 15 MAY 2025 to 12 JUN 2025