

LINCOLN, NEBRASKA

# HI-VOR Z or TACAN RWY 18

VORTAC LNK <b>116.1</b> Chan <b>108</b>	APCH CRS <b>185°</b>	Rwy ldg <b>12,901</b> TDZE <b>1195</b> Arprt Elev <b>1219</b>
-----------------------------------------------	-------------------------	---------------------------------------------------------------------

[USAF]

LINCOLN (KLNK)

DME, RADAR required.



MISSED APPROACH: Climb to 3300 via LNK VORTAC R-185 to JOGAN 14 DME and hold.

ATIS <b>118.05 290.9</b>	OMAHA APP CON <b>124.0 270.3</b>	TOWER★ <b>118.5 253.5</b>	GND CON <b>121.9 275.8</b>	CLNC DEL <b>120.7 225.4</b>
-----------------------------	-------------------------------------	------------------------------	-------------------------------	--------------------------------

Inoperative table does not apply.

When local altimeter setting not received use Beatrice altimeter setting.

1706

△ 2048

(IAF) COOCH LNK 29

(IF) QIRQU LNK 10

WETOS LNK 2

HUMSI LNK 1

LINCOLN  
116.1 LNK  
Chan 108

△ 3030

△ 1452

△ 1450

△ 1639

△ 1720

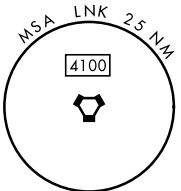
JOGAN LNK 14

△ 1455

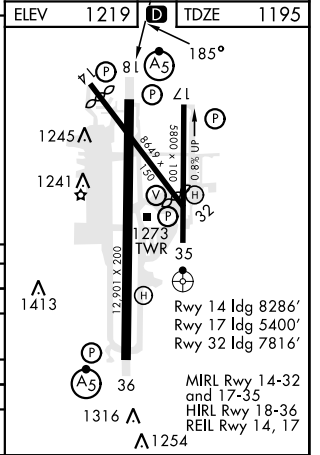
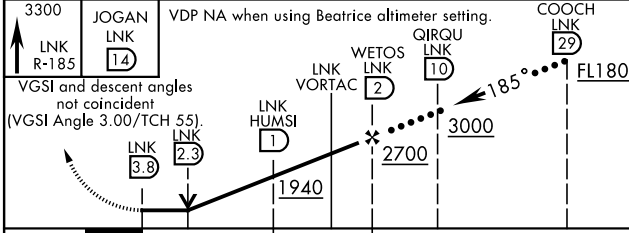
△ 1650

R-185

LNK 19



EMERG SAFE ALT 100 NM 4800



CATEGORY	C	D	E
S-18	1720-1½	525	(600-1½)
CIRCLING	1760-1½ 541 (600-1½)	1820-2 601 (700-2)	2040-3 821 (900-3)
BEATRICE ALTIMETER SETTING			
S-18	1820-1¾	625	(700-1¾)
CIRCLING	1860-1¾ 641 (700-1¾)	1920-2¼ 701 (800-2¼)	2140-3 921 (1000-3)

LINCOLN, NEBRASKA

40°51'N-96°46'W

LINCOLN (KLNK)

Amdt 5A 31OCT24

# HI-VOR Z or TACAN RWY 18

NC-2, 15 MAY 2025 to 12 JUN 2025

NC-2, 15 MAY 2025 to 12 JUN 2025