

LINCOLN, NEBRASKA

# HI-VOR/DME or TACAN RWY 36

VORTAC LNK <b>116.1</b> Chan <b>108</b>	APCH CRS <b>360°</b>	Rwy ldg <b>12,901</b> TDZE <b>1175</b> Arprt Elev <b>1219</b>
-----------------------------------------------	-------------------------	---------------------------------------------------------------------

[USAF]

LINCOLN (KLNK)

RADAR required

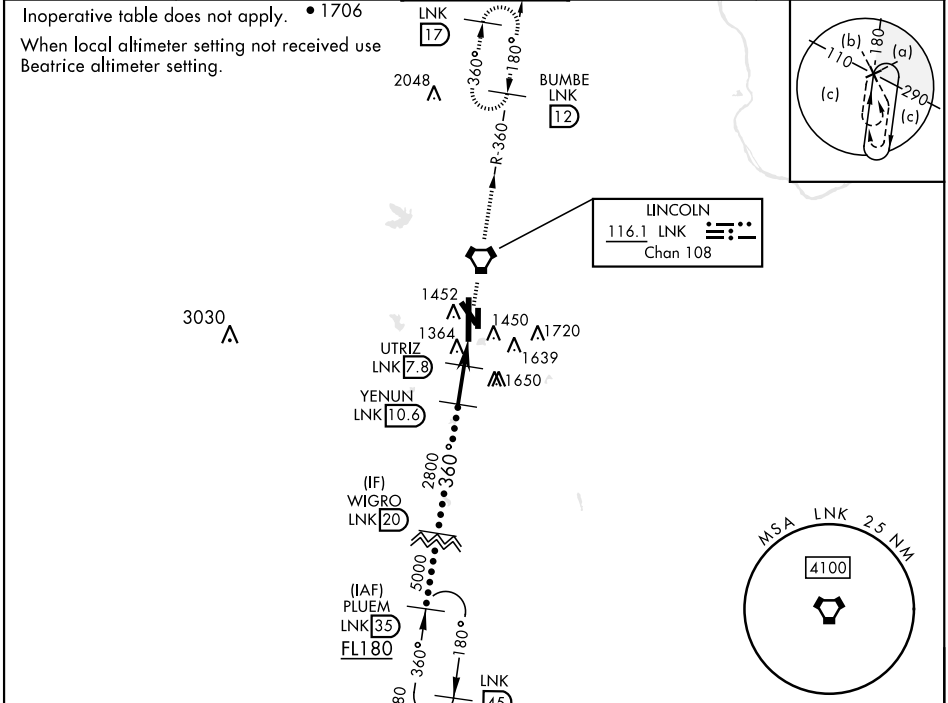


MISSED APPROACH: Climb to 3000 direct LNK VORTAC then via LNK R-360 to BUMBE 12 DME and hold.

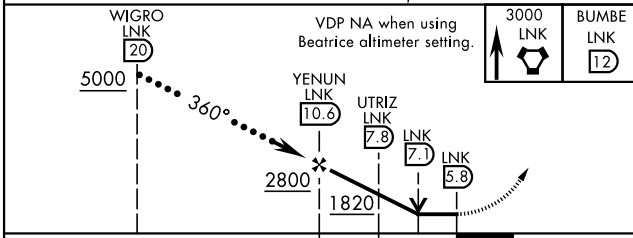
\* When ALS inop, increase CAT E vis to 1 3/8 miles.  
 \*\* When ALS inop, increase CAT CDE vis to 1 1/8 miles.

ATIS <b>118.05 290.9</b>	OMAHA APP CON <b>124.0 270.3</b>	TOWER * <b>118.5 253.5</b>	GND CON <b>121.9 275.8</b>	CLNC DEL <b>120.7 225.4</b>
-----------------------------	-------------------------------------	-------------------------------	-------------------------------	--------------------------------

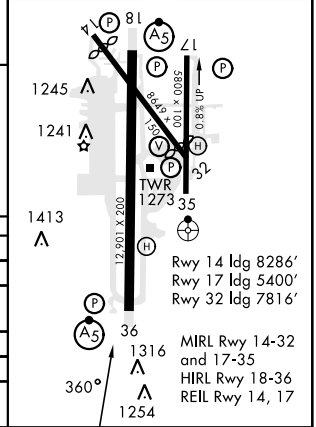
Inoperative table does not apply. • 1706  
 When local altimeter setting not received use Beatrice altimeter setting.



EMERG SAFE ALT 100 NM 4800



ELEV	1219	TDZE	1175
------	------	------	------



LINCOLN, NEBRASKA

40°51'N-96°46'W

LINCOLN (KLNK)

Amtd 5 31OCT24

# HI-VOR/DME or TACAN RWY 36

NC-2, 15 MAY 2025 to 12 JUN 2025

NC-2, 15 MAY 2025 to 12 JUN 2025