

# HI-ILS Z or LOC Z RWY 18

LOC I-OCZ <b>111.1</b>	APCH CRS <b>177°</b>	Rwy Idg <b>12,901</b> TDZE <b>1195</b> Arprt Elev <b>1219</b>	AL-232 [USAF]	LINCOLN (KLNK)
---------------------------	-------------------------	---	---------------	----------------

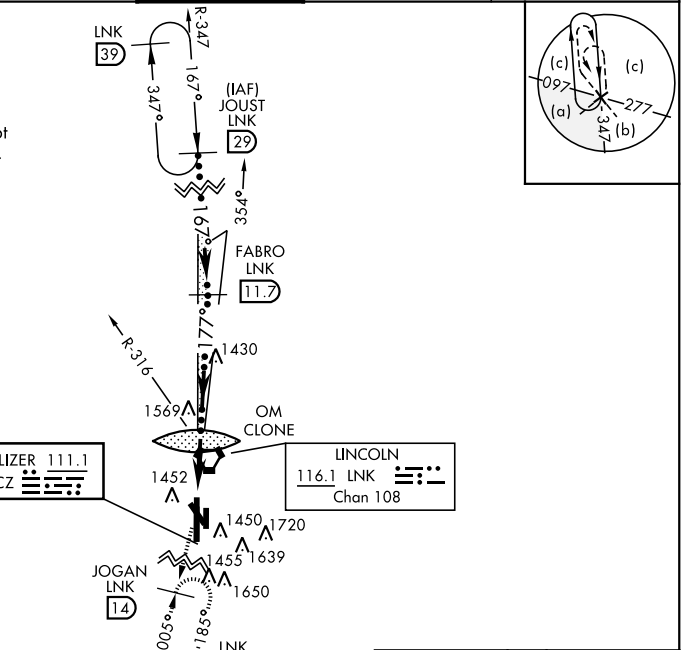
DME, RADAR required for procedure entry.

**MALS**  MISSED APPROACH: Climb to 3300 on LNK VORTAC R-185 to JOGAN (LNK 14 DME) and hold.

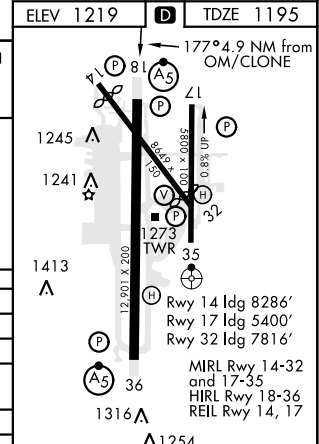
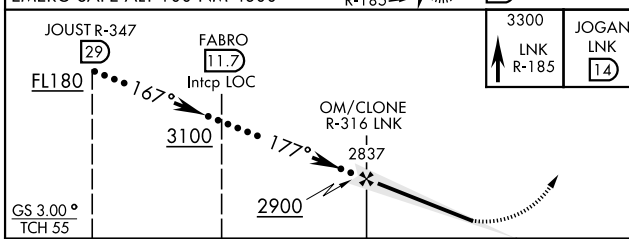
ATIS <b>118.05 290.9</b>	OMAHA APP CON <b>124.0 270.3</b>	TOWER* <b>118.5 253.5</b>	GND CON <b>121.9 275.8</b>	CLNC DEL <b>120.7 225.4</b>
-----------------------------	-------------------------------------	------------------------------	-------------------------------	--------------------------------

\*\*\* When ALS inop, increase RVR to 45, vis to 7/8 mile.  
† When ALS inop, increase vis to 2 miles.

When local altimeter setting not received use Beatrice altimeter.



EMERG SAFE ALT 100 NM 4800



CATEGORY	C	D	E
S-ILS 18*	1395/24	200	(200-1/2)
S-LOC 18**	1820-1 3/8	625	(700-1 1/8)
CIRCLING	1820-1 3/4 601 (700-1 3/4)	1820-2 601 (700-2)	2040-3 821 (900-3)
BEATRICE ALTIMETER SETTING			
S-ILS 18***	1486/24	291	(200-1/2)
S-LOC 18 †	1920-1 5/8	725	(800-1 5/8)
CIRCLING	1920-2 701 (800-2)	1920-2 1/4 701 (800-2 1/4)	2140-3 1/4 921 (1000-3 1/4)

FAF to MAP 4.9 NM					
Knots	120	140	160	180	200
Min:Sec	2:27	2:06	1:50	1:38	1:28

# HI-ILS Z or LOC Z RWY 18

NC-2, 15 MAY 2025 to 12 JUN 2025

NC-2, 15 MAY 2025 to 12 JUN 2025