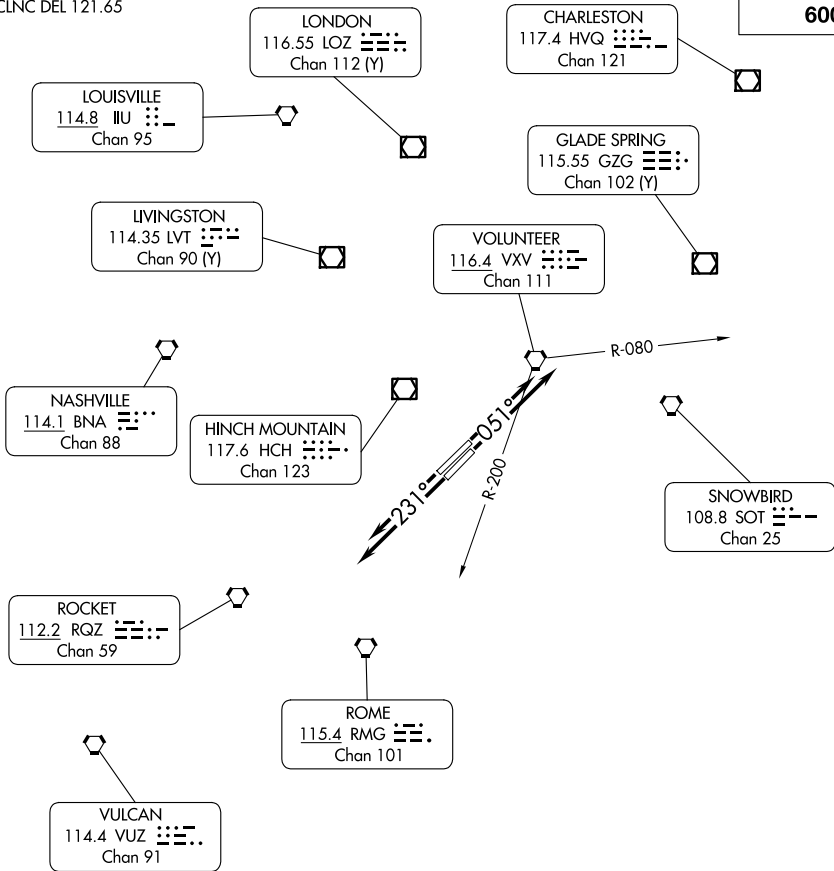


KNOXVILLE SEVEN DEPARTURE

ATIS 128.35
CLNC DEL 121.65

**TOP ALTITUDE:
6000**



SE-1, 15 MAY 2025 to 12 JUN 2025

SE-1, 15 MAY 2025 to 12 JUN 2025

TAKEOFF MINIMUMS:
Rwy 5L/R, 23L/R: Standard.

NOTE: RADAR required.
NOTE: Chart not to scale.

DEPARTURE ROUTE DESCRIPTION

TAKEOFF RUNWAY 5L/5R: Climb on heading 051° or as assigned for vectors to filed route, thence....

TAKEOFF RUNWAY 23L/R: Climb on heading 231° or as assigned for vectors to filed route, thence....

....maintain 6000 (or assigned lower altitude). Expect clearance to requested altitude/flight level ten minutes after departure.

LOST COMMUNICATIONS: If filed route is between the VXV R-080 and the VXV R-200 and radio contact is not established with departure control prior to reaching 6000 continue climb to 9000 before turning on course.

KNOXVILLE SEVEN DEPARTURE