

HI-VOR or TACAN RWY 23R

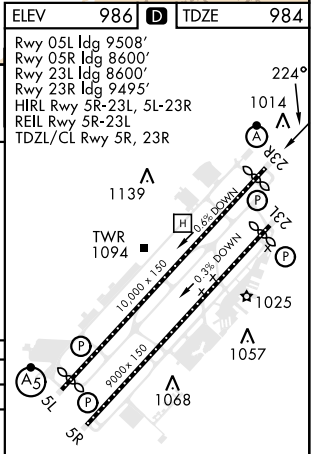
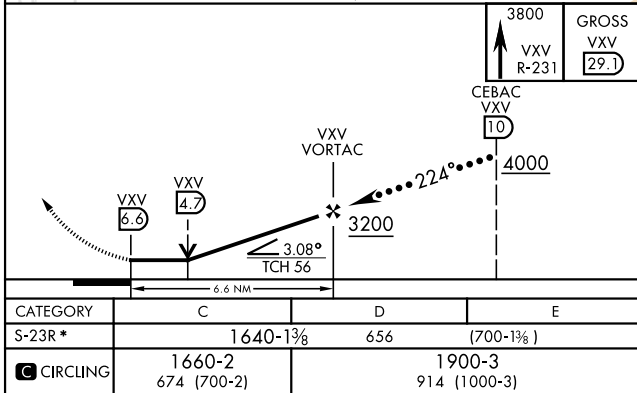
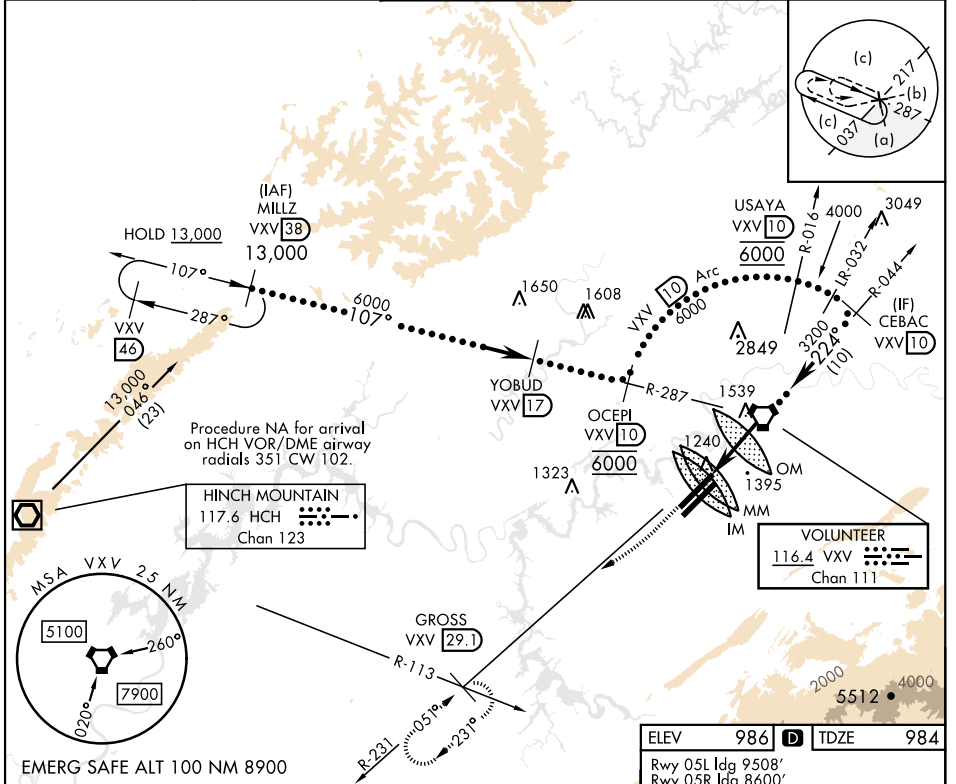
VORTAC VXV 116.4 Chan 111	APCH CRS 224°	Rwy ldg TDZE Arprt Elev 9495 984 986
---	-------------------------	--

[USAF]

MC GHEE TYSON (KTYS)

DME required	ALSIF-2	MISSED APPROACH: Climb to 3800 direct on VXV VORTAC R-231 to GROSS/29.1 DME and hold.
--------------	---------	---

ATIS 128.35	KNOXVILLE APP CON 123.9 360.8	KNOXVILLE TOWER 121.2 257.8	GND CON 121.9 348.6	CLNC DEL 121.65
-----------------------	---	---------------------------------------	-------------------------------	---------------------------



HI-VOR or TACAN RWY 23R

SE-1, 15 MAY 2025 to 12 JUN 2025

SE-1, 15 MAY 2025 to 12 JUN 2025