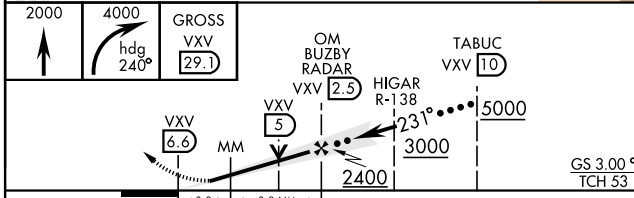
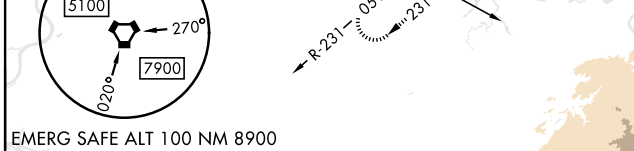
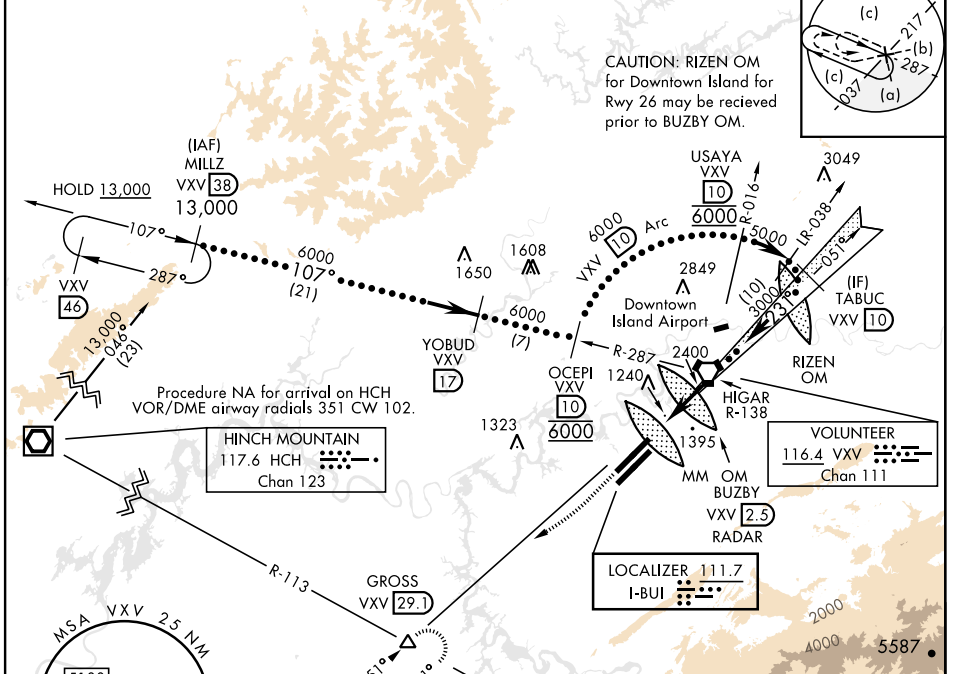


HI-ILS or LOC RWY 23R

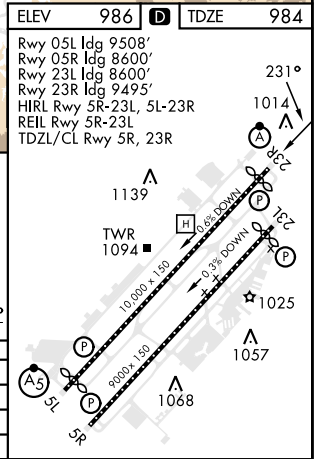
LOC I-BUI 111.7	APCH CRS 231°	Rwy ldg TDZE Arprt Elev 9495 984 986	[USAF]	MC GHEE TYSON (KTYS)
DME required		ALSF-2	MISSED APPROACH: Climb to 2000 then dimbing right turn to 4000 on heading 240° and VXV VORTAC R-231 to GROSS/VXV 29.1 DME and hold.	
*When ALS inop, increase CAT E RVR to 40, vis to ¾ mile. **When ALS inop, increase vis to 1½ miles.				

ATIS 128.35	KNOXVILLE APP CON 123.9 360.8	KNOXVILLE TOWER 121.2 257.8	GND CON 121.9 348.6	CLNC DEL 121.65
-----------------------	---	---------------------------------------	-------------------------------	---------------------------

RVR 1800 authorized with use of FD or AP or HUD to DA (NA when using altimeter setting).



CATEGORY	C	D	E
S-ILS 23R *	1184/1800	200	(200-½)
S-LOC 23R **	1560-1¼	576	(600-1¼)
CIRCLING	1660-2 674 (700-2)	1900-3	914 (1000-3)



HI-ILS or LOC RWY 23R

SE-1, 15 MAY 2025 to 12 JUN 2025

SE-1, 15 MAY 2025 to 12 JUN 2025