

| | | |
|-------------|----------|-------------|
| APP CRS | Rwy Idg | 6005 |
| 177° | TDZE | 966 |
| | Apt Elev | 966 |

RNAV (GPS) RWY 18

KIRKSVILLE RGNL (IRK)

RNP APCH.

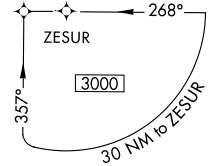
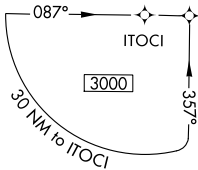
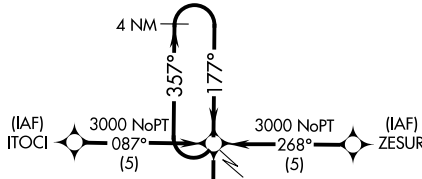
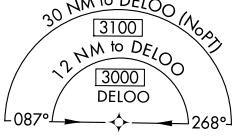
▼ Circling NA to Rwy 9 and 27.
Rwy 18 helicopter visibility reduction below 3/4 SM NA.

MISSED APPROACH: Climb to 3000 direct HOROK and hold.

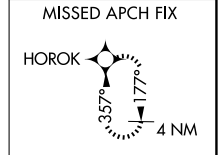
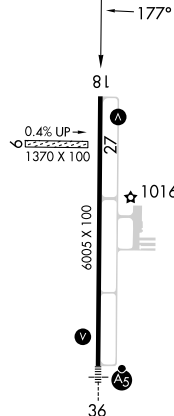
ASOS
121.125

KANSAS CITY CENTER
132.6 370.9

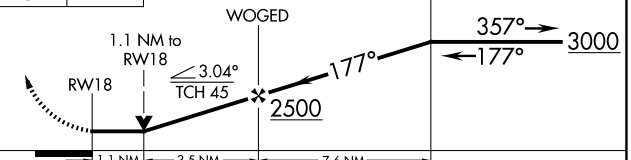
UNICOM
122.8 (CTAF) 0



ELEV 966 **D** TDZE 966



3000 HOROK VGSI and descent angles not coincident (VGSI Angle 3.00/TCH 33). 4 NM Holding Pattern



| CATEGORY | A | B | C | D |
|----------|--------------------|--------------------|----------------------------|------------------------|
| LNAV MDA | 1340-1 374 (400-1) | | | 1340-1 374 (400-1 1/2) |
| CIRCLING | 1400-1 434 (500-1) | 1440-1 474 (500-1) | 1460-1 1/2 494 (500-1 1/2) | 1540-2 574 (600-2) |

KIRKSVILLE, MISSOURI
Amdt 2B 17JUN21

40°06'N-92°33'W

RNAV (GPS) RWY 18

NC-3, 15 MAY 2025 to 12 JUN 2025

NC-3, 15 MAY 2025 to 12 JUN 2025