

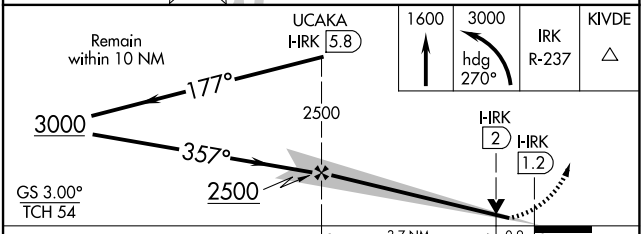
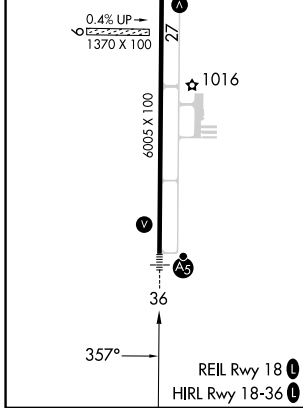
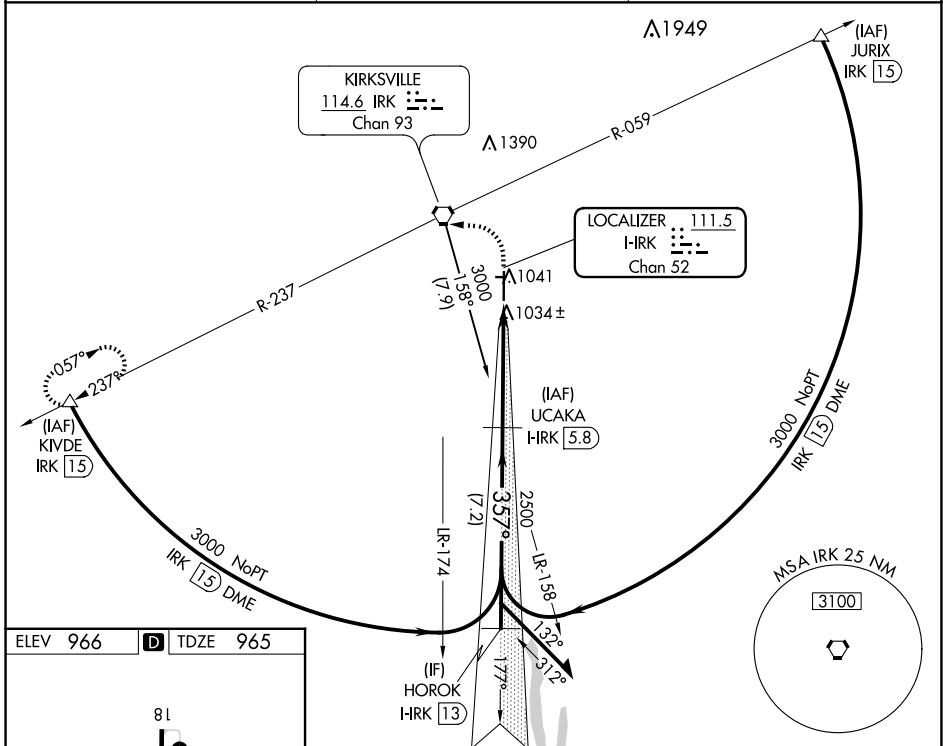
LOC/DME I-IRK 111.5 Chan 52	APP CRS 357°	Rwy Idg TDZE Apt Elev	6005 965 966
--	------------------------	-----------------------------	---

ILS or LOC RWY 36

KIRKSVILLE RGNL (IRK)

DME required.	MALSR 	MISSED APPROACH: Climb to 1600 then climbing left turn to 3000 on heading 270° and IRK VORTAC R-237 to KIVDE/IRK 1.5 DME and hold.

ASOS 121.125	KANSAS CITY CENTER 132.6 370.9	UNICOM 122.8 (CTAF) 0
------------------------	--	---------------------------------



CATEGORY	A	B	C	D
S-ILS 36		1165-1/2	200 (200-1/2)	
S-LOC 36		1300-1/2	335 (400-1/2)	
CIRCLING	1400-1	1440-1	1460-1 1/2	1540-2
	434 (500-1)	474 (500-1)	494 (500-1 1/2)	574 (600-2)

NC-3, 15 MAY 2025 to 12 JUN 2025

NC-3, 15 MAY 2025 to 12 JUN 2025