

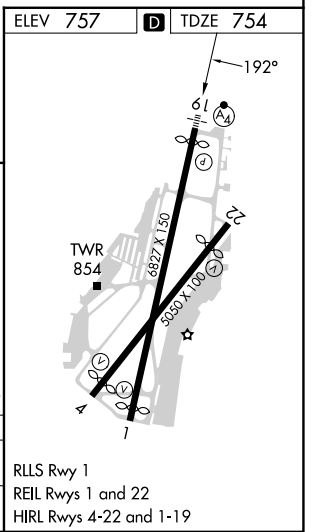
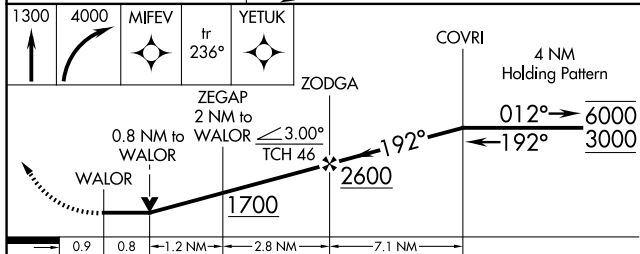
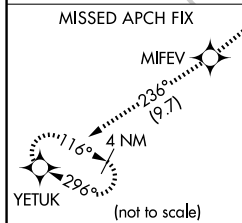
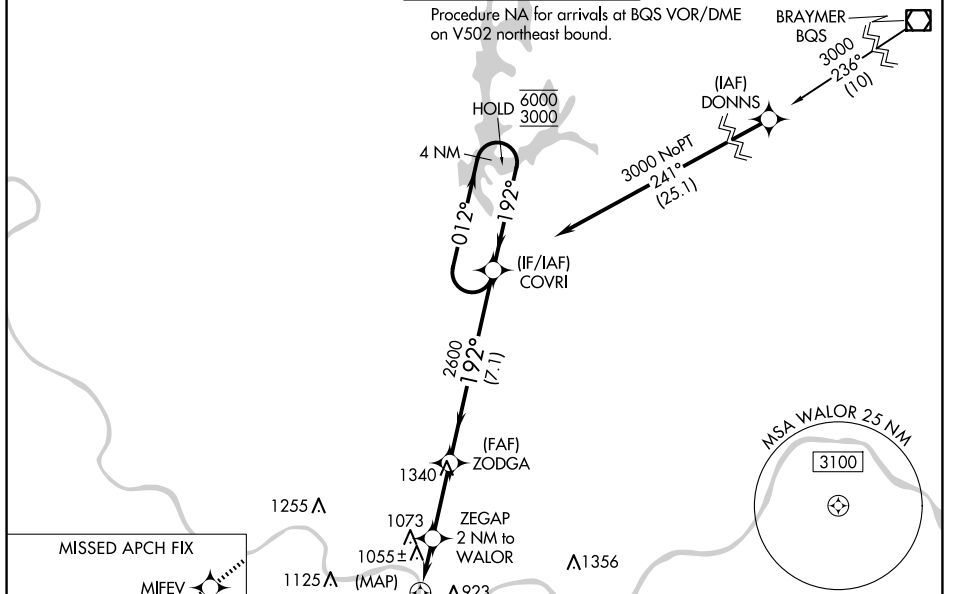
APP CRS	Rwy Idg	<b>6526</b>
<b>192°</b>	TDZE	<b>754</b>
	Apt Elev	<b>757</b>

# RNAV (GPS) Y RWY 19

KANSAS CITY DOWNTOWN/WHEELER FLD (MKC)

RNP APCH-GPS.	MALSF	MISSED APPROACH: Climb to 1300 then climbing right turn to 4000 direct MIFEV and on track 236° to YETUK and hold.
Circling NA east of Rwy 1-19. Helicopter visibility reduction below RVR 4000 NA. Circling NA for Cat D to Rwy 4. For inop ALS, increase LNAV Cats A/B visibility to RVR 6000 and Cats C/D to 1 3/4 SM. Circling NA to Rwy 22.		

ATIS <b>120.75</b>	KANSAS CITY APP CON <b>118.4 307.35</b>	DOWNTOWN TOWER <b>133.3 233.7</b>	CLNC DEL <b>121.9</b>	GND CON <b>121.9</b>
-----------------------	--	--------------------------------------	--------------------------	-------------------------



CATEGORY	A	B	C	D
LNAV MDA	1340/40	586 (600-3/4)	1340-1 3/8 586 (600-1 3/8)	
CIRCLING	1380-1 1/8 623 (700-1 1/8)	1400-1 1/8 643 (700-1 1/8)	1460-2 703 (800-2)	1540-2 1/2 783 (800-2 1/2)

RLS Rwy 1  
REIL Rws 1 and 22  
HIRL Rws 4-22 and 1-19

# RNAV (GPS) Y RWY 19

NC-3, 15 MAY 2025 to 12 JUN 2025

NC-3, 15 MAY 2025 to 12 JUN 2025