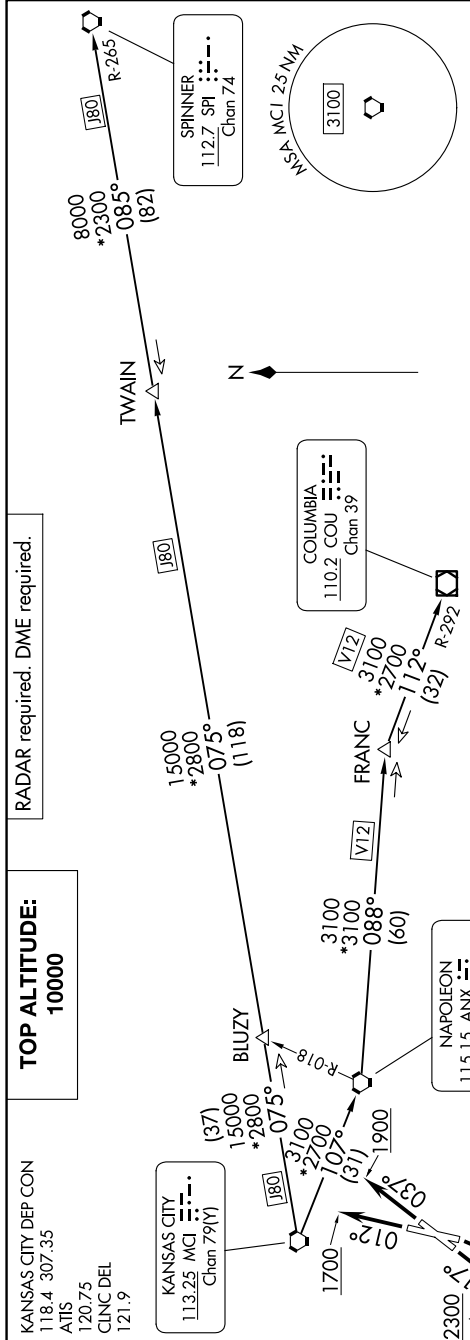


LAKES FIVE DEPARTURE

NC-3, 15 MAY 2025 to 12 JUN 2025



DEPARTURE ROUTE DESCRIPTION

- TAKEOFF RUNWAY 1:** Climb on heading 012° to 1700, thence. . . .
- TAKEOFF RUNWAY 4:** Climb on heading 037° to 1900, thence. . . .
- TAKEOFF RUNWAY 19:** Climbing right turn heading 215° to 2500, thence. . . .
- TAKEOFF RUNWAY 22:** Climb on heading 217° to 2300, thence. . . .
- . . . climb on assigned heading for RADAR vectors to appropriate route. Maintain 10000 or as assigned by ATC. Expect filed altitude 10 minutes after departure.
- COLUMBIA TRANSITION (LAKES5.COU):** From over MCI VORTAC on MCI R-107 to ANX VORTAC, then on ANX R-088 and COU R-292 to COU VOR/DME.
- FRANC TRANSITION (LAKES5.FRANC):** From over MCI VORTAC on MCI R-107 to ANX VORTAC, then on ANX R-088 to FRANC.
- SPINNER TRANSITION (LAKES5.SPI):** From over MCI VORTAC on MCI R-107 to SPI R-265 to TWAIN, then on SPI R-265 to SPI VORTAC.
- TWAIN TRANSITION (LAKES5.TWAIN):** From over MCI VORTAC on MCI R-075 and SPI R-265 to TWAIN.

TOP ALTITUDE:
10000

KANSAS CITY DEP CON
118.4 307.35
ATIS
120.75
CLINC DEL
121.9

KANSAS CITY
113.25 MCI
Chan 79(Y)

BLUZY
15000
2800
075°
(118)

FRANC
3100
3100
088°
(60)

TWAIN
8000
2300
085°
(82)

TAKEOFF MINIMUMS

- Rwy 1: 300-17' or standard with minimum climb of 201' per NM to 1000.
- Rwy 4: Standard.
- Rwy 19: Standard with minimum climb of 465' per NM to 2500.
- Rwy 22: 300-1½' or standard with minimum climb of 260' per NM to 1000.

NOTE: Chart not to scale.

NC-3, 15 MAY 2025 to 12 JUN 2025