

HI-TACAN Z RWY 28

TACAN Chan 19	NIP	APCH CRS 286°	Rwy ldg TDZE Arpt Elev 9003 13 23
-------------------------	-----	-------------------------	---

[USN]

JACKSONVILLE NAS (TOWERS FLD) (KNIP)

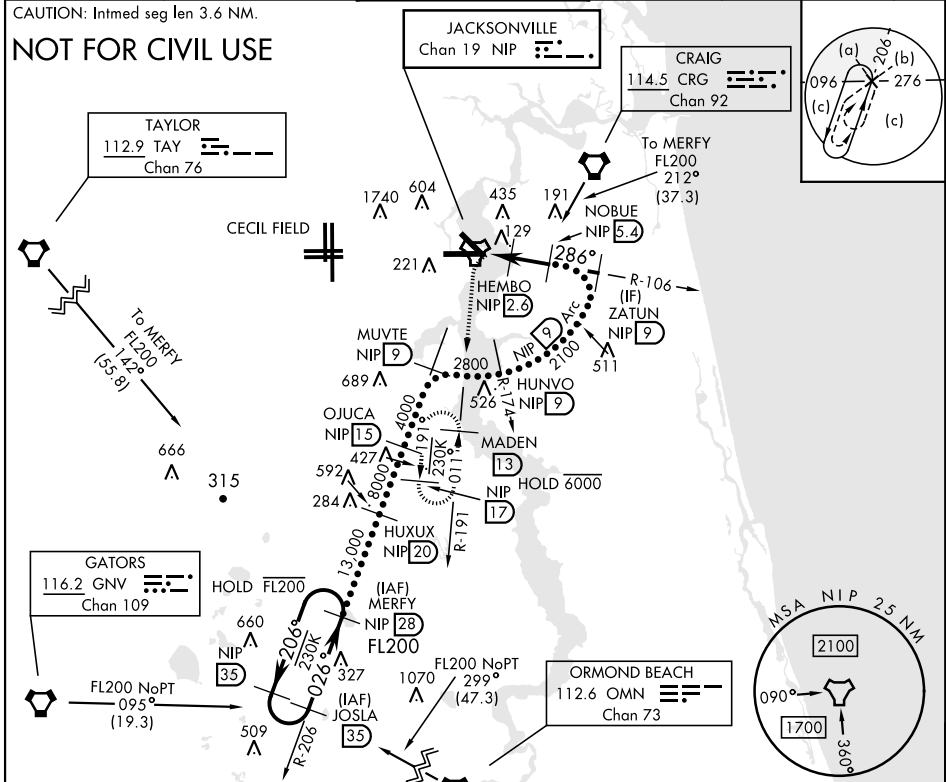
* When ALS inop, increase CAT CDE vis to 1½ miles.

 MISSED APPROACH: Climb to 2000 direct NIP TACAN and turn left outbound R-191 to MADEN and hold.

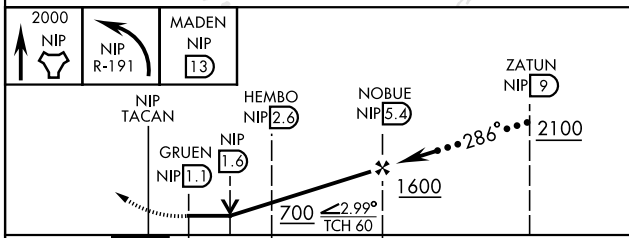
ATIS 124.35 290.425	APP CON 127.775 377.075	NAVY JACKSONVILLE TOWER 125.15 (CTAF) 340.2	GND CON 128.6 336.4	CLNC DEL 134.775 0353.675	ASR/ PAR
-------------------------------	-----------------------------------	---	-------------------------------	-------------------------------------	-------------

CAUTION: Inmd seg len 3.6 NM.

NOT FOR CIVIL USE



EMERG SAFE ALT 100 NM 2800



CATEGORY	C	D	E
S-28 *		400-7/8	387 (400-7/8)
CIRCLING	560-1½ 537 (600-1½)	780-2½ 757 (800-2½)	980-3 957 (1000-3)

ELEV	23	TDZE	13
------	----	------	----

Rwy 10 ldg 8006'
 Rwy 14 ldg 3244'

HIRL Rwy 10-28

HI-TACAN Z RWY 28

SE-3, 15 MAY 2025 TO 12 JUN 2025

SE-3, 15 MAY 2025 TO 12 JUN 2025