

# MEARZ SEVEN DEPARTURE

INDIANAPOLIS, INDIANA

**TOP ALTITUDE:**  
**(JETS) 5000**  
**(PROPS) 3000**

RADAR required.

D-ATIS 134.25  
 CLNC DEL 128.75 251.1  
 CPDLC  
 GND CON 121.9  
 INDY TOWER 120.9 251.1  
 INDIANAPOLIS DEP CON 124.95 317.8 (EAST)  
 119.05 317.8 (WEST)

BOILER  
 115.1 BVT  
 Chan 98

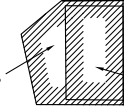
MARION  
 108.6 MZZ  
 Chan 23

BRICKYARD  
 116.3 VHP  
 Chan 110

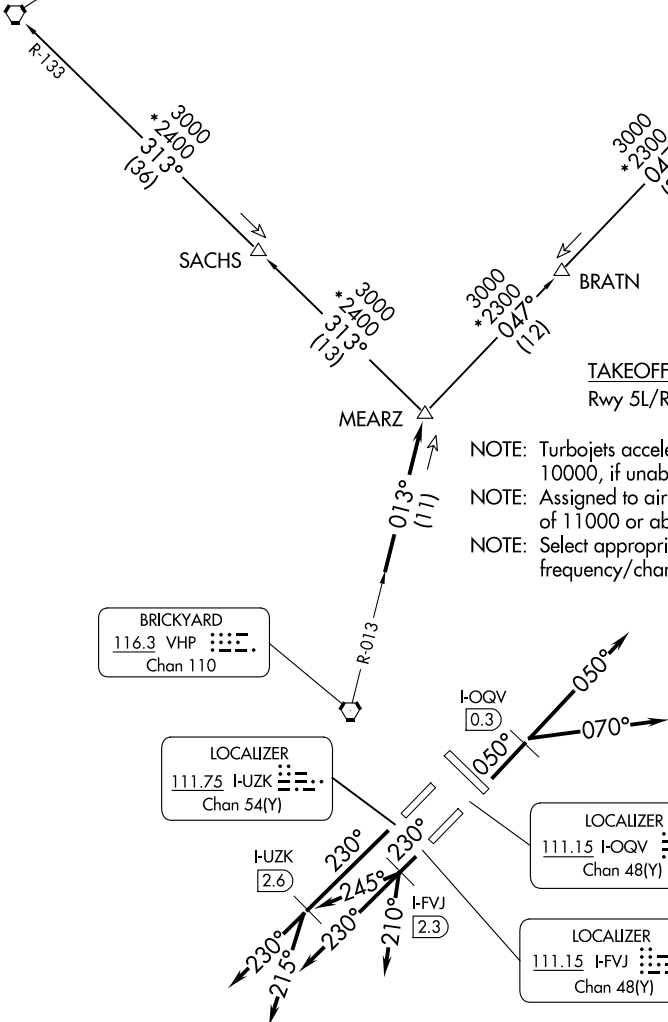
LOCALIZER  
 111.75 I-UZK  
 Chan 54(Y)

LOCALIZER  
 111.15 I-OQV  
 Chan 48(Y)

LOCALIZER  
 111.15 I-FVJ  
 Chan 48(Y)



NOTE: Chart not to scale.



### TAKEOFF MINIMUMS

Rwy 5L/R, 14, 23L/R, 32: Standard.

- NOTE: Turbojets accelerate to 250K until reaching 10000, if unable advise ATC.
- NOTE: Assigned to aircraft with a requested altitude of 11000 or above.
- NOTE: Select appropriate localizer/DME frequency/channel prior to departure.

EC-2, 15 MAY 2025 to 12 JUN 2025

EC-2, 15 MAY 2025 to 12 JUN 2025

(NARRATIVE ON FOLLOWING PAGE)

# MEARZ SEVEN DEPARTURE

(MEARZ7.MEARZ) 19MAY22

INDIANAPOLIS, INDIANA

INDIANAPOLIS INTL (IND)