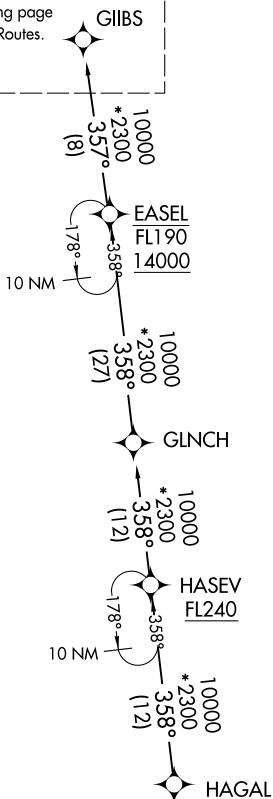


GIIBS FOUR ARRIVAL (RNAV) Transition Routes

INDIANAPOLIS APP CON
128.175 317.8
D-ATIS 134.25

See following page
for Arrival Routes.

RNAV 1 - DME/DME/IRU or GPS.
RADAR required.



EASEL TRANSITION (EASEL.GIIBS4):
HAGAL TRANSITION (HAGAL.GIIBS4):

- NOTE: Expect descend via clearance and landing direction assignment by Indianapolis Center. Approach will assign landing rwy.
- NOTE: EASEL TRANSITION for SDF terminal area departures only.
- NOTE: For non-GPS equipped aircraft landing Rwy 14; SHB DME must be operational.
- NOTE: KIND landing southwest select Rwy 23L transition. Expect runway assignment from Indianapolis APP CON prior to GIIBS.
- NOTE: KIND landing northeast select Rwy 5R transition. Expect runway assignment from Indianapolis APP CON prior to GIIBS.

(CONTINUED ON FOLLOWING PAGE)

NOTE: Chart not to scale.

EC-2, 15 MAY 2025 to 12 JUN 2025

EC-2, 15 MAY 2025 to 12 JUN 2025