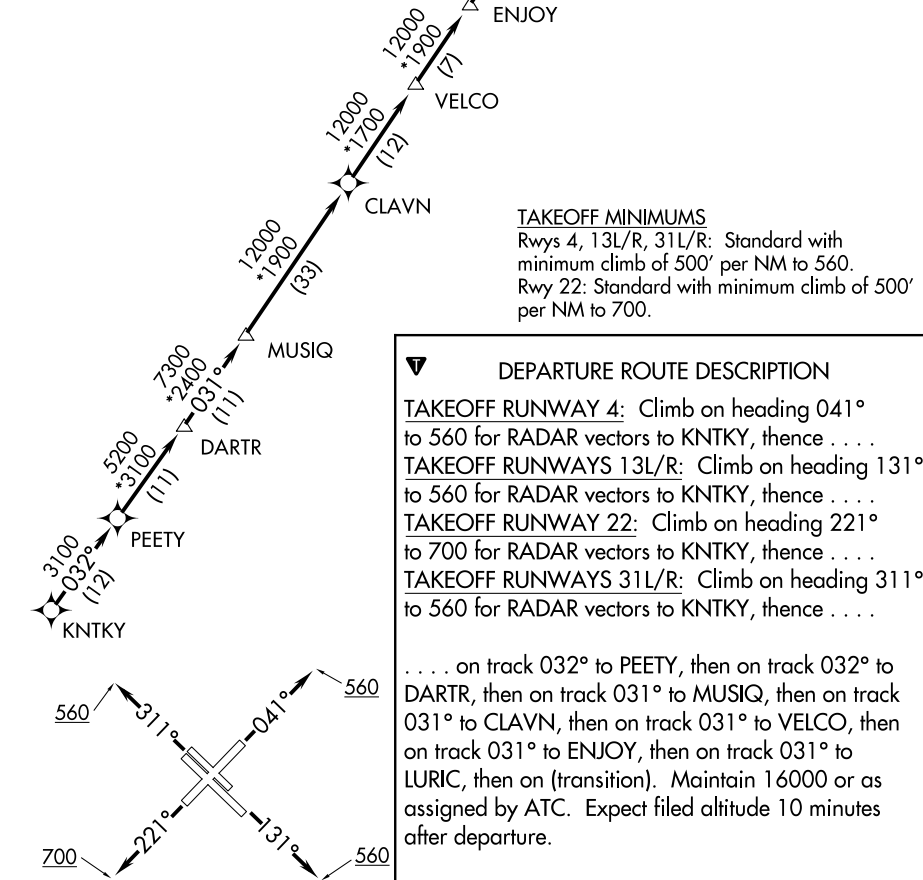


LURIC EIGHT DEPARTURE (RNAV)

D-ATIS
124.6
CLINC DEL
125.45
CPDLC
GND CON
121.9
HOBBY TOWER
118.7 256.9
HOUSTON DEP CON
132.25 285.425

**TOP ALTITUDE:
16000**

NOTE: RADAR required.
NOTE: DME/DME/IRU or GPS required.
NOTE: RNAV 1.



TAKEOFF MINIMUMS

Rwys 4, 13L/R, 31L/R: Standard with minimum climb of 500' per NM to 560.
Rwy 22: Standard with minimum climb of 500' per NM to 700.

DEPARTURE ROUTE DESCRIPTION

TAKEOFF RUNWAY 4: Climb on heading 041° to 560 for RADAR vectors to KNTKY, thence

TAKEOFF RUNWAYS 13L/R: Climb on heading 131° to 560 for RADAR vectors to KNTKY, thence

TAKEOFF RUNWAY 22: Climb on heading 221° to 700 for RADAR vectors to KNTKY, thence

TAKEOFF RUNWAYS 31L/R: Climb on heading 311° to 560 for RADAR vectors to KNTKY, thence

. . . . on track 032° to PEETY, then on track 032° to DARTR, then on track 031° to MUSIQ, then on track 031° to CLAVN, then on track 031° to VELCO, then on track 031° to ENJOY, then on track 031° to LURIC, then on (transition). Maintain 16000 or as assigned by ATC. Expect filed altitude 10 minutes after departure.

HAWES TRANSITION (LURIC8.HAWES)
ORRTH TRANSITION (LURIC8.ORRTH)

NOTE: Chart not to scale

SC-5, 15 MAY 2025 to 12 JUN 2025

SC-5, 15 MAY 2025 to 12 JUN 2025