

CRIED ONE DEPARTURE

AL-198 (FAA)

WILLIAM P HOBBY (HOU)
HOUSTON, TEXAS

D-ATIS
124.6
CLNC DEL
125.45
CPDLC
GND CON
121.9
HOBBY TOWER
118.7 256.9
HOUSTON DEP CON
132.25 285.425

**TOP ALTITUDE:
16000**

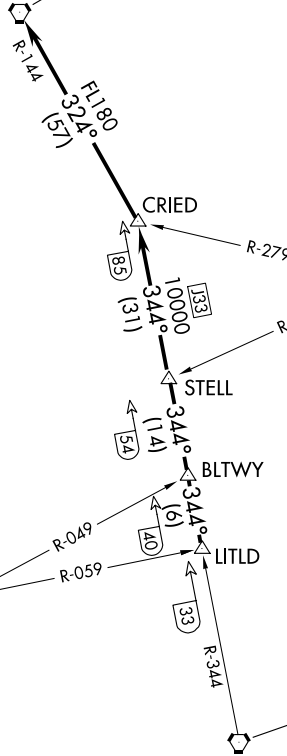
CEDAR CREEK
114.8 CQY
Chan 95

LUFKIN
112.1 LFK
Chan 58

NAVASOTA
115.9 TNV
Chan 106

HUMBLE
116.6 IAH
Chan 113

NOTE: RADAR required.



TAKEOFF MINIMUMS
Rwys 4, 13L/R, 31L/R: Standard.
Rwy 22: Standard with minimum climb of 290' per
NM to 1500.

SC-5, 15 MAY 2025 to 12 JUN 2025

SC-5, 15 MAY 2025 to 12 JUN 2025

(CONTINUED ON FOLLOWING PAGE)

NOTE: Chart not to scale.

CRIED ONE DEPARTURE