

WYLSN EIGHT DEPARTURE (RNAV)

ATIS
 135.575 269.9
 GND CON
 121.6 275.8
 ELLINGTON TOWER
 126.05 253.5
 HOUSTON DEP CON
 134.45 284.0

**TOP ALTITUDE:
 ASSIGNED BY ATC**

NOTE: RADAR required.
 NOTE: DME/DME/IRU or GPS required.
 NOTE: RNAV 1.

TAKEOFF MINIMUMS

Rwys 4, 17L/R, 22, 35L/R: Standard with minimum climb of 500' per NM to 540.

DEPARTURE ROUTE DESCRIPTION

TAKEOFF RUNWAY 4: Climb on heading 039° to 540 for RADAR vectors to WYLSN, thence. . . .

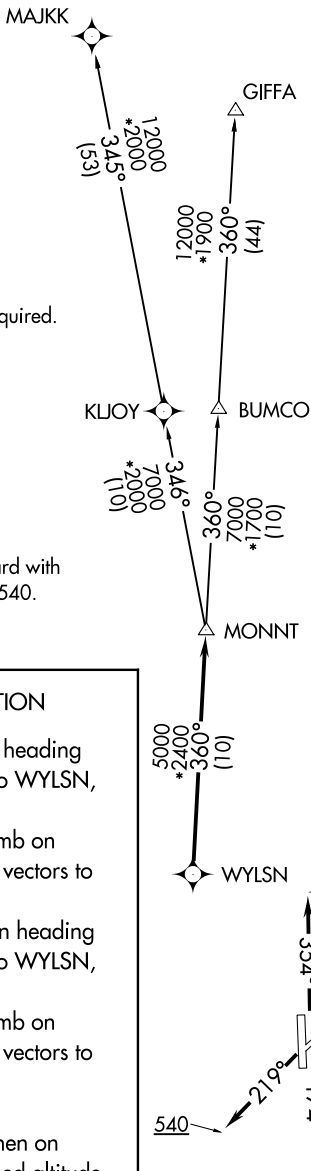
TAKEOFF RUNWAYS 17L/R: Climb on heading 174° to 540 for RADAR vectors to WYLSN, thence. . . .

TAKEOFF RUNWAY 22: Climb on heading 219° to 540 for RADAR vectors to WYLSN, thence. . . .

TAKEOFF RUNWAYS 35L/R: Climb on heading 354° to 540 for RADAR vectors to WYLSN, thence. . . .

. . . .on track 360° to MONNT, then on (transition). Maintain ATC assigned altitude. Expect filed altitude 10 minutes after departure.

GIFFA TRANSITION (WYLSN8.GIFFA)
MAJKK TRANSITION (WYLSN8.MAJKK)



NOTE: Chart not to scale.

WYLSN EIGHT DEPARTURE (RNAV)

SC-5, 15 MAY 2025 to 12 JUN 2025

SC-5, 15 MAY 2025 to 12 JUN 2025